

Acute myeloid leukaemia without maturation



Fig 1: Blasts with round nuclei with prominent nucleoli, some of which have azurophilic granulation (bone marrow).

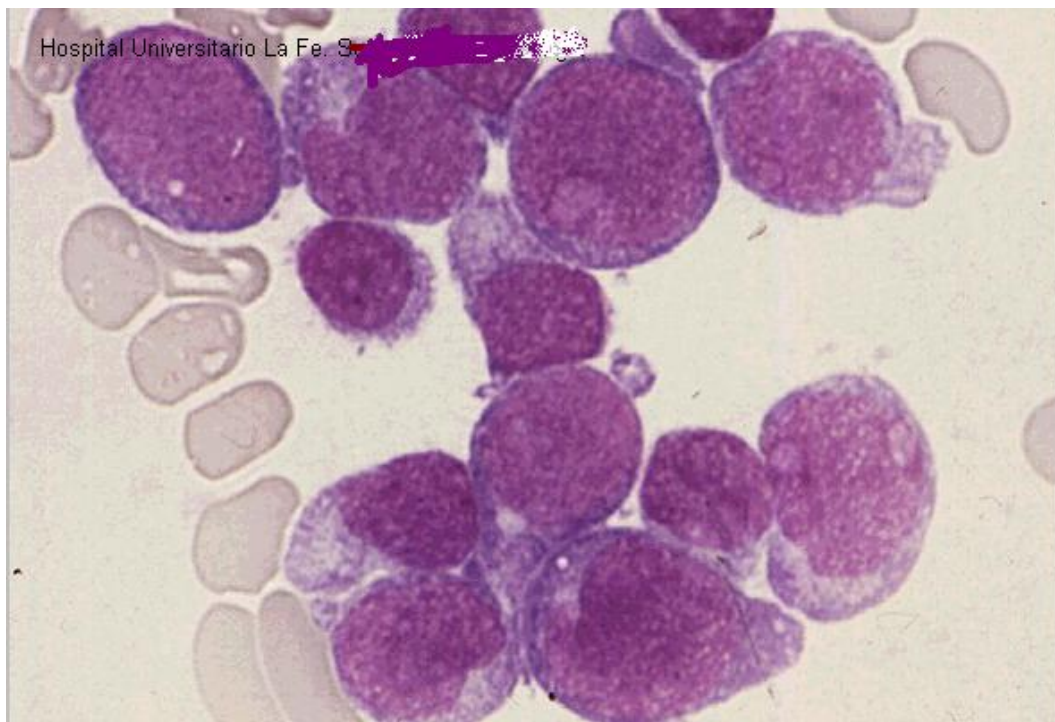


Fig 2: Blasts with round nuclei with prominent nucleoli and lack azurophilic granules (bone marrow).



Fig 3. Blasts with Auer rods.



Fig 4. SSB positivity in some blasts (bone marrow).