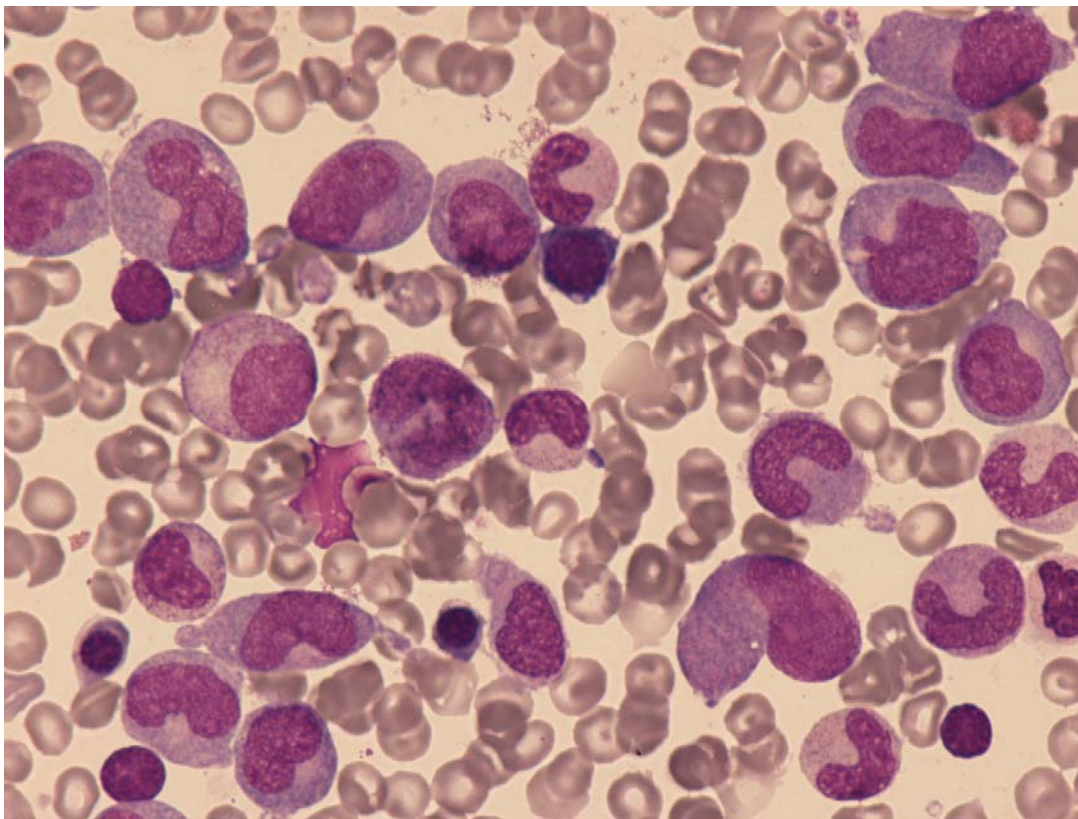
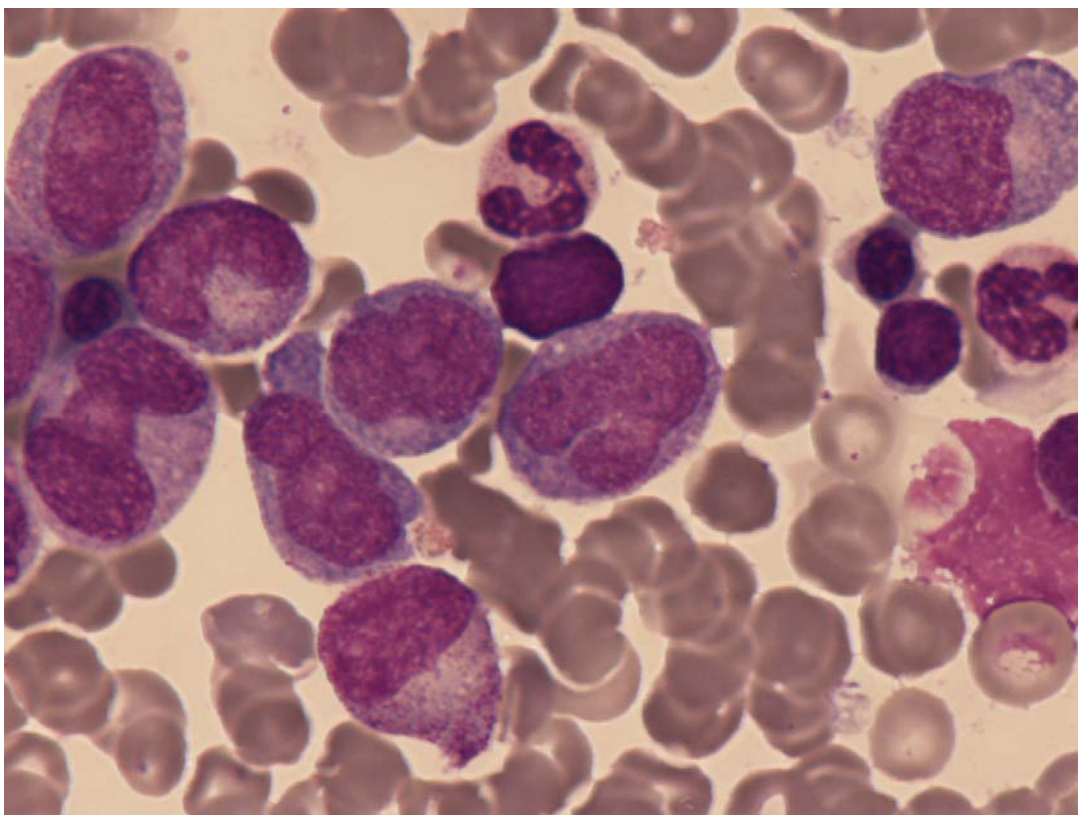


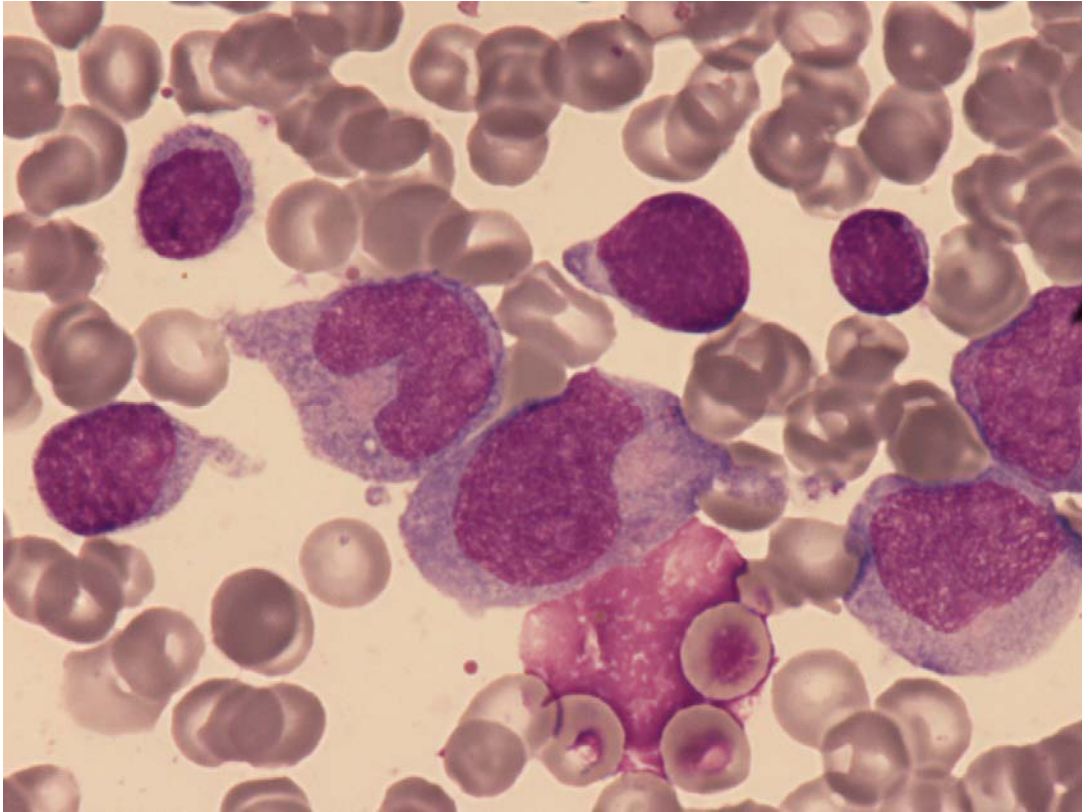
**Acute myeloid leukaemia with t(9;11)(p22;q23); (*MLLT3-MLL*)**



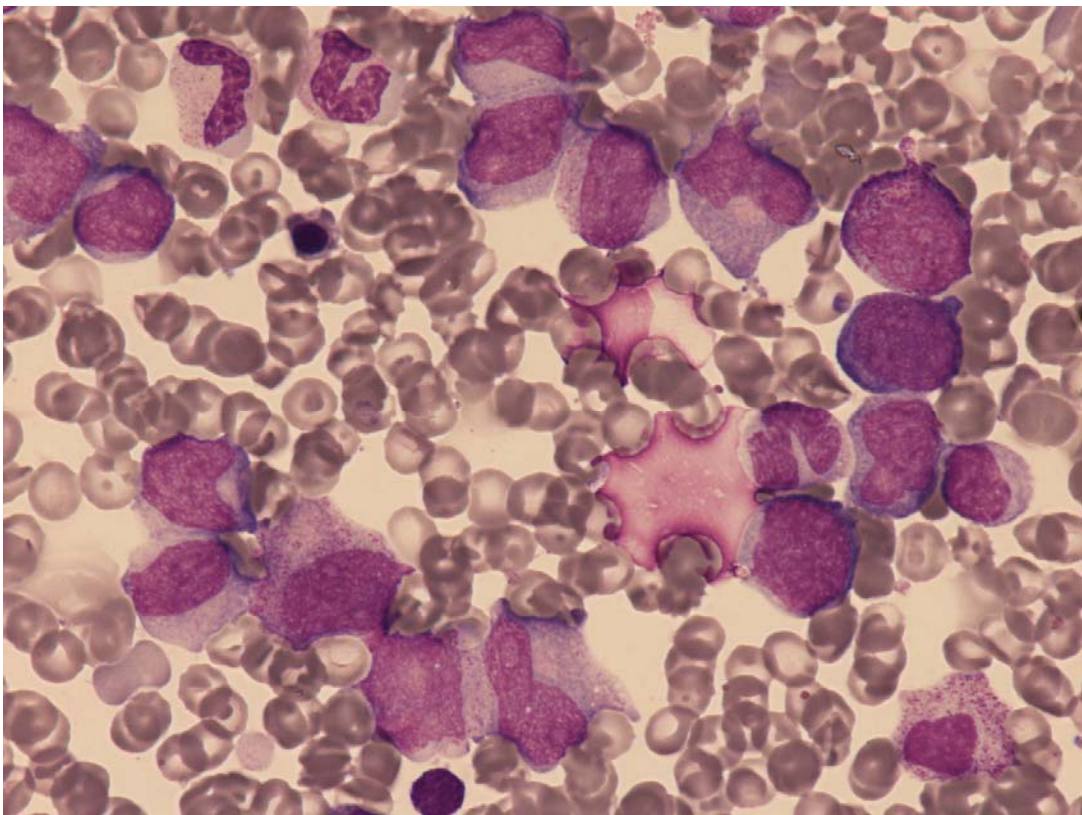
**Fig1:** Promonocytes and monoblasts and granulocytic dysplasia.



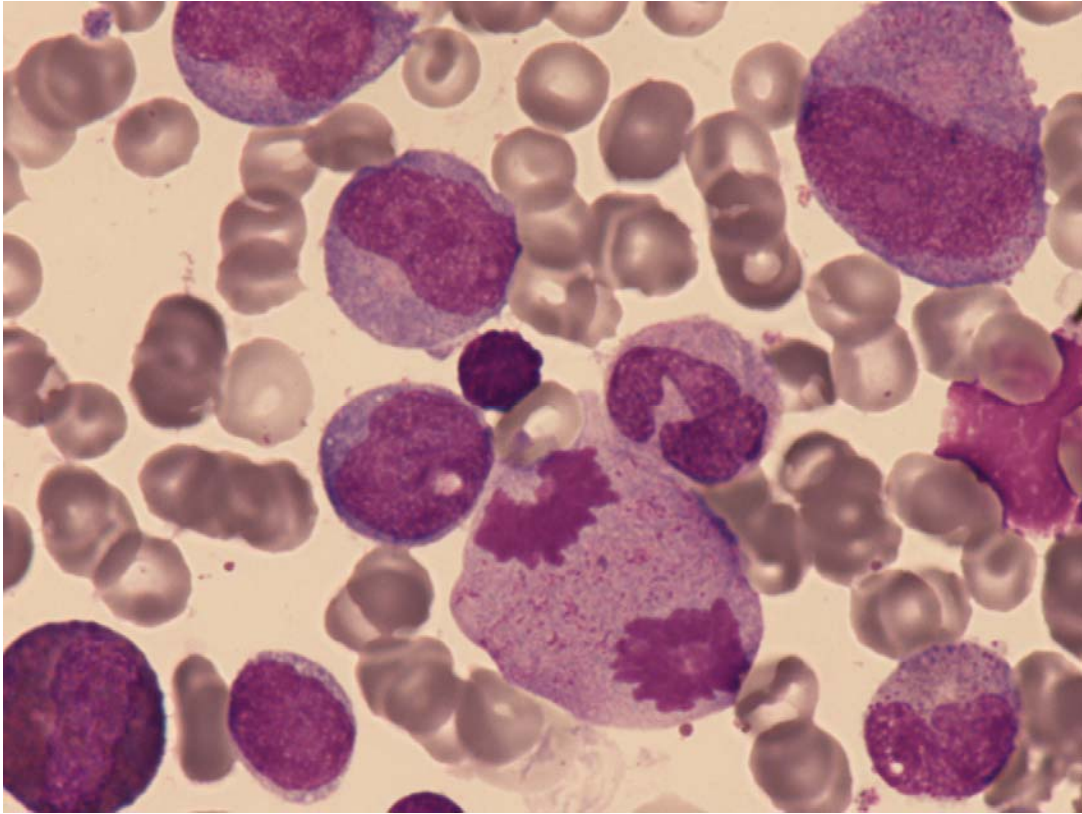
**Fig 2:** Promonocytes.



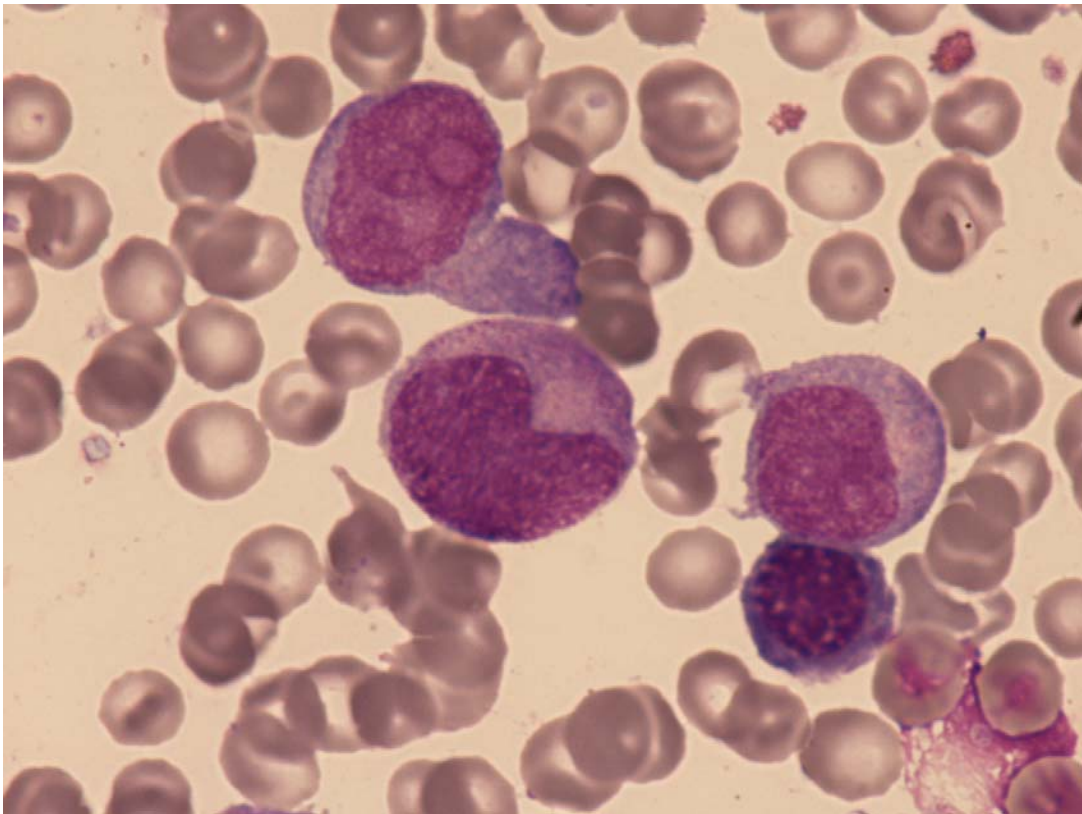
**Fig 3:** Promonocytes and monoblasts.



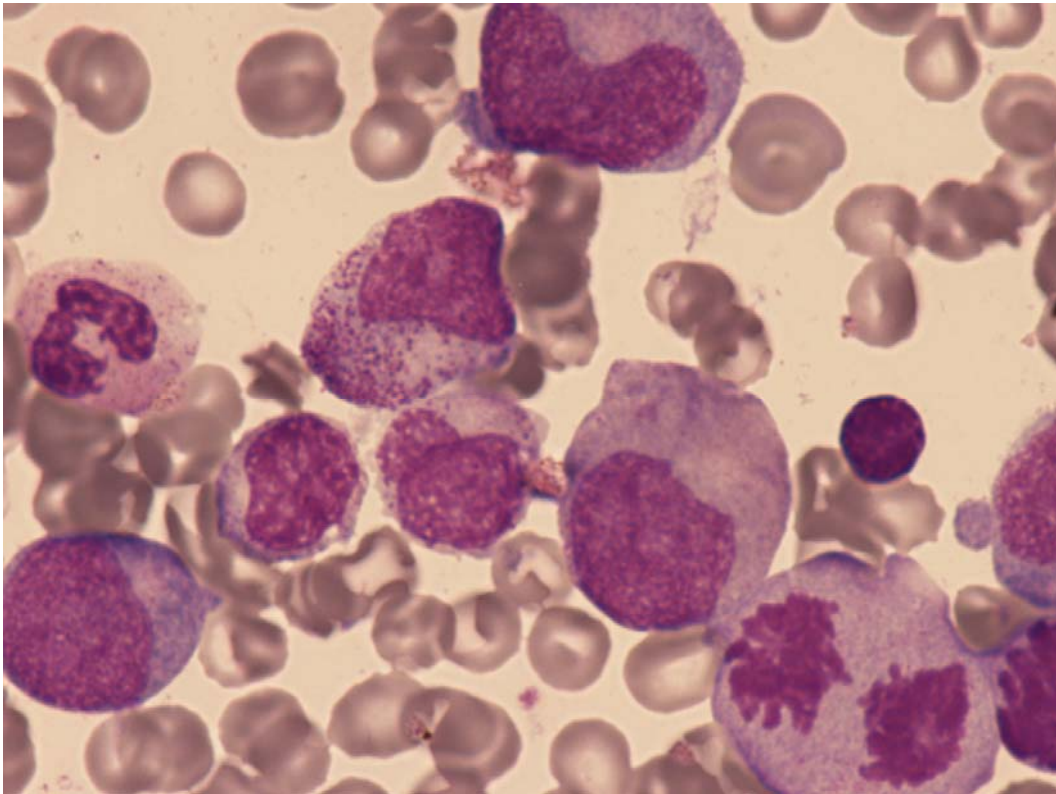
**Fig 4:** Promonocytes and monoblasts and granulocytic dysplasia.



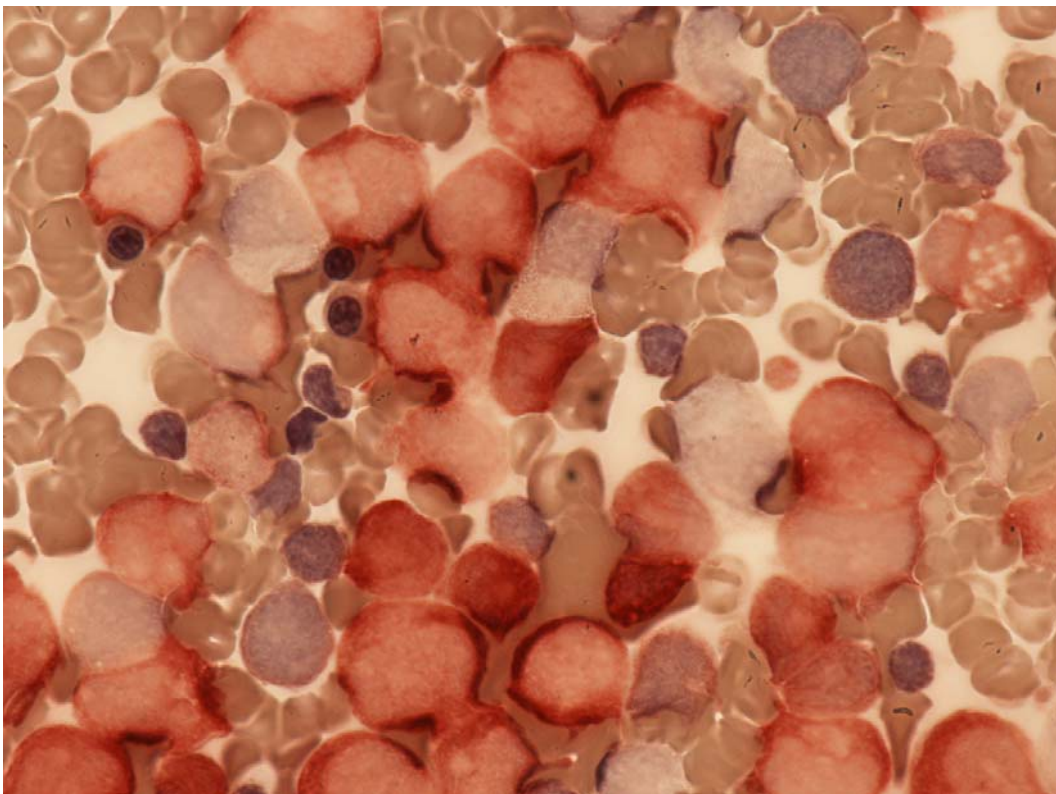
**Fig 5:** Promonocytes and granulocytic dysplasia.



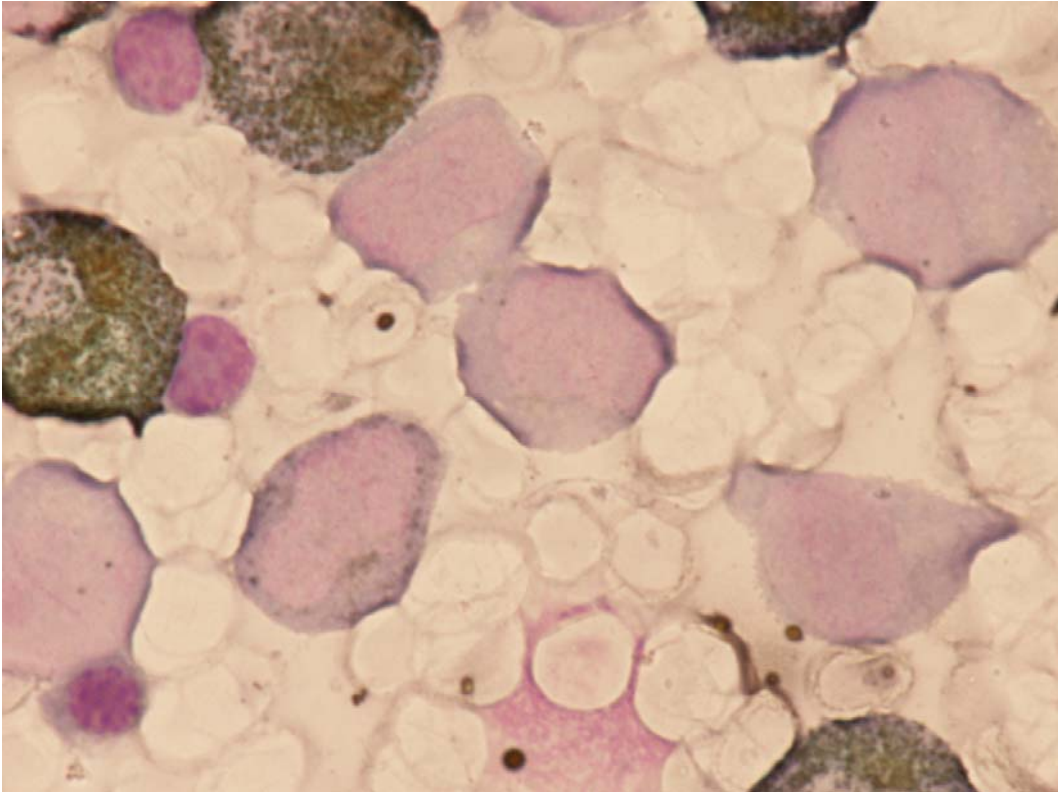
**Fig 6:** Myeloblasts monoblasts.



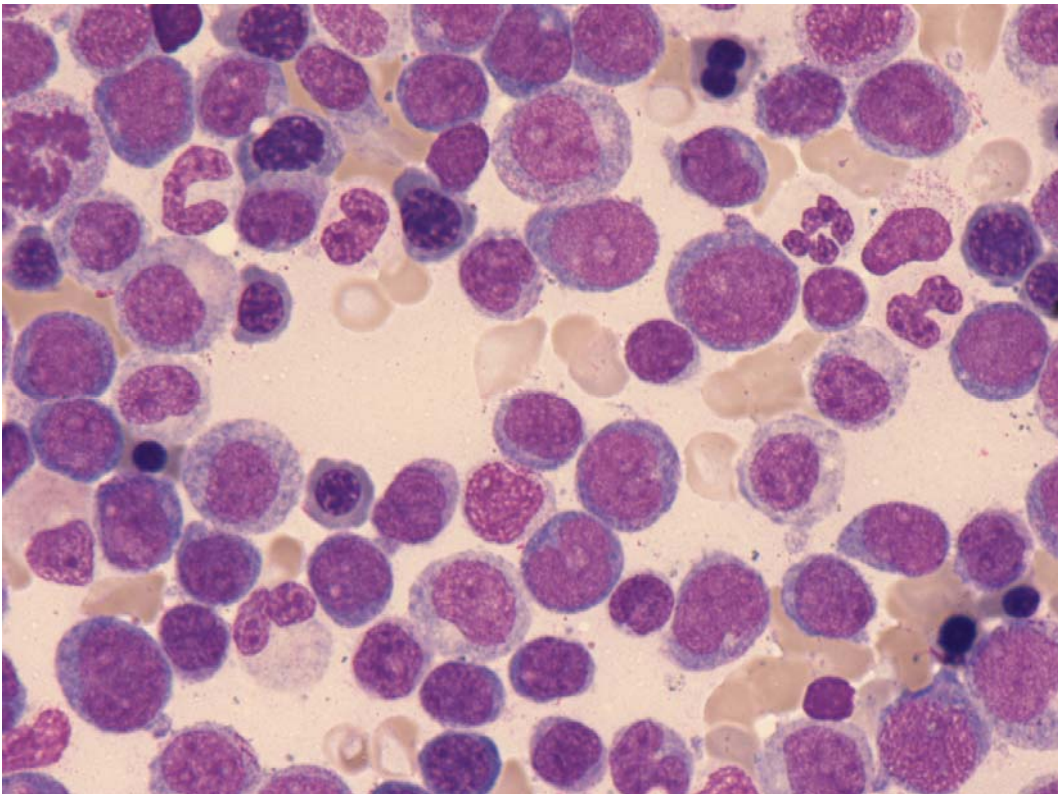
**Fig 7:** Promonocytes and monoblasts and granulocytic dysplasia.



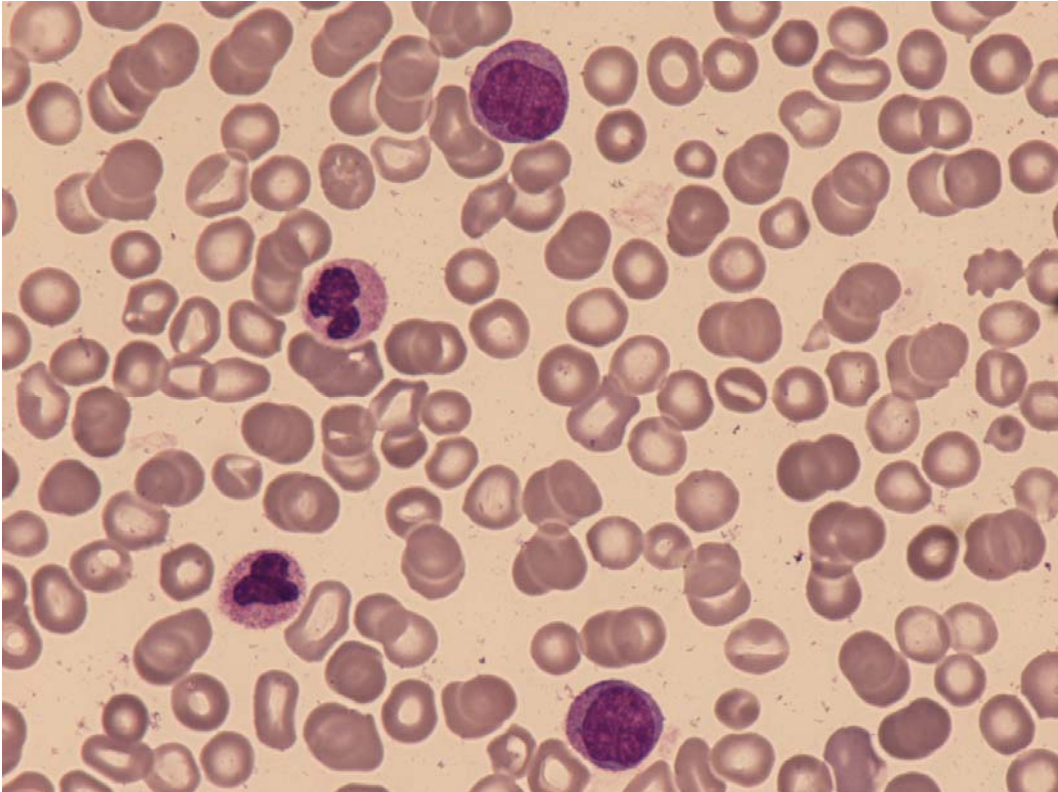
**Fig 8:** Blasts show intense non specific esterase (butyrate -ANBE) positivity.



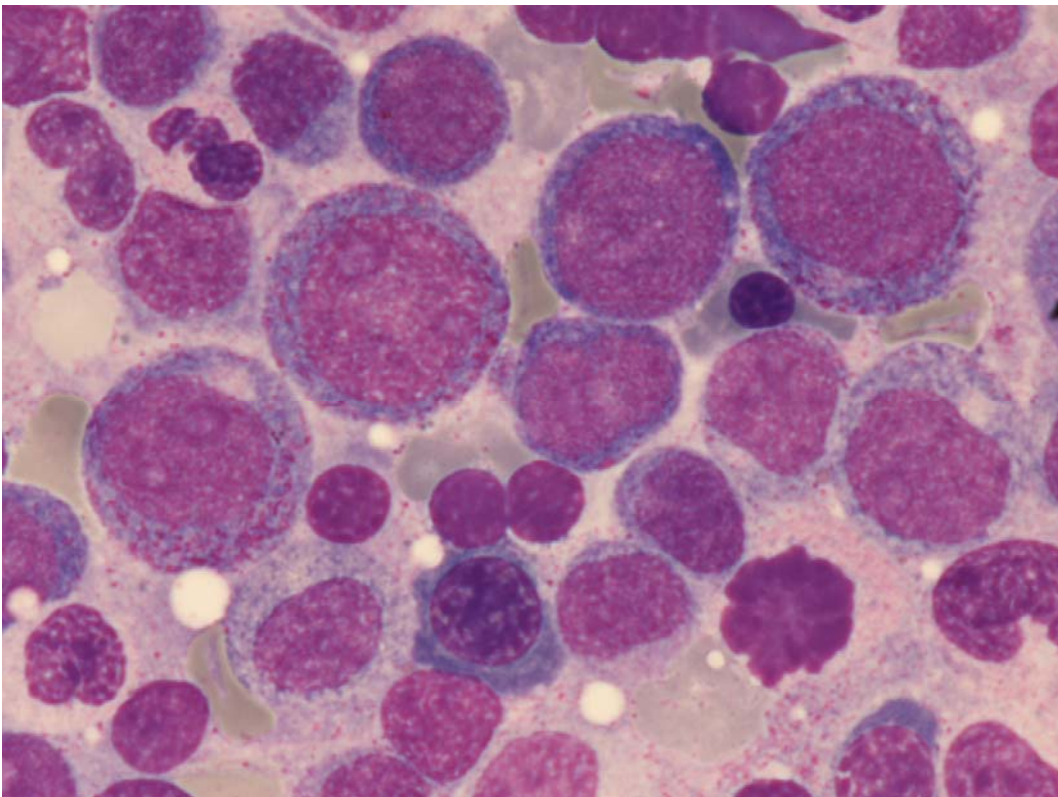
**Fig 9:** Blasts MPO negatives or weakly positive.



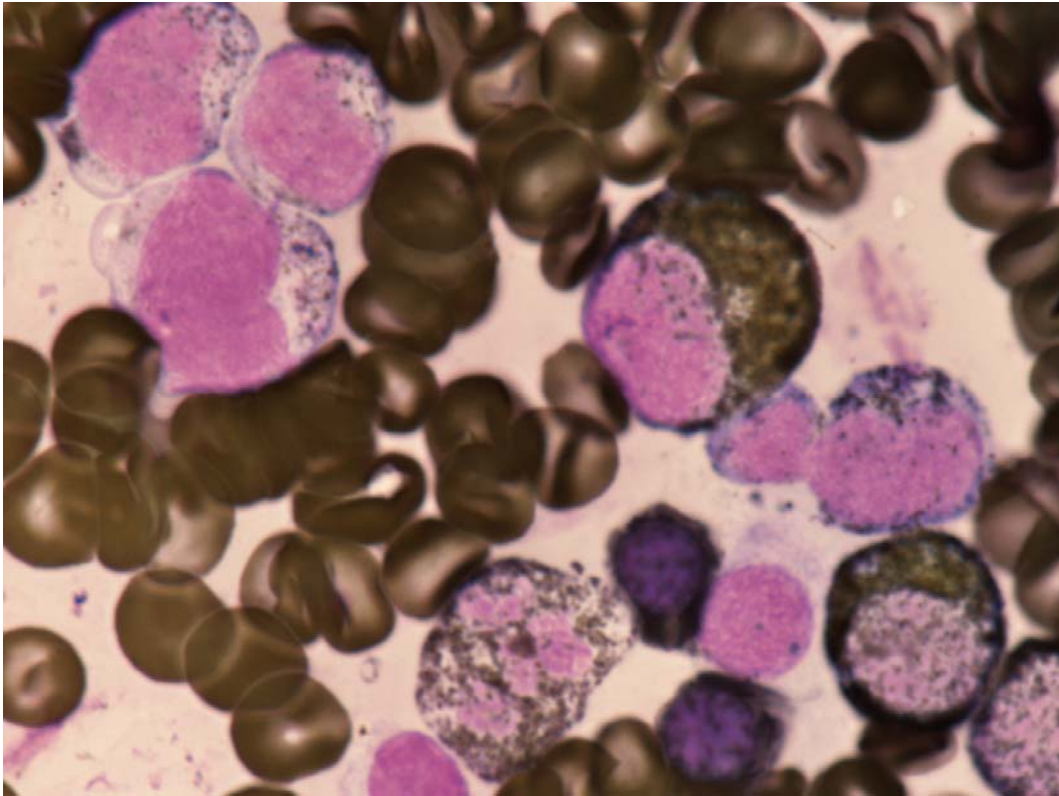
**Fig 10:** Bone marrow with monoblasts and granulocytic dysplasia.



**Fig 11:** Promonocytes and granulocytes in PB.



**Fig 12:** Bone marrow blasts with large azurophilic granules and granulocytic dysplasia.



**Fig 13:** Blasts MPO weakly positive.