

Acute myeloid leukaemia with t(6;9)(p23;q34); (*DEK-NUP214*)

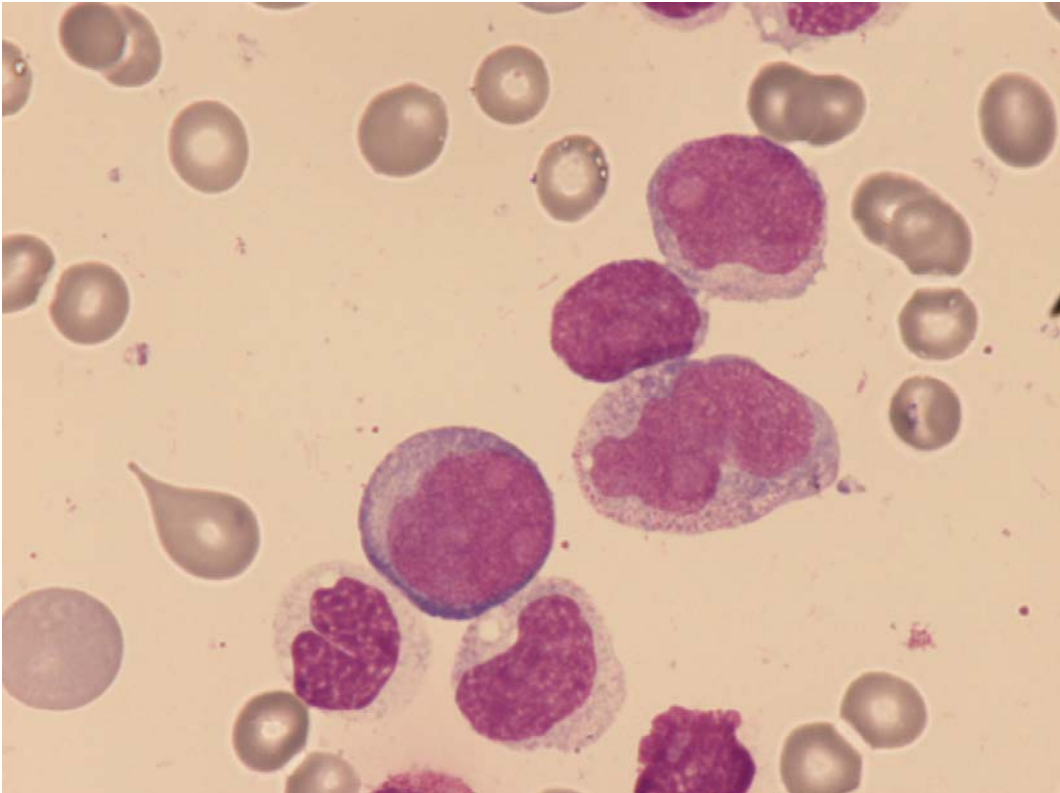


Fig1: Bone marrow with granulocytic dysplasia monoblasts and promonocytes.

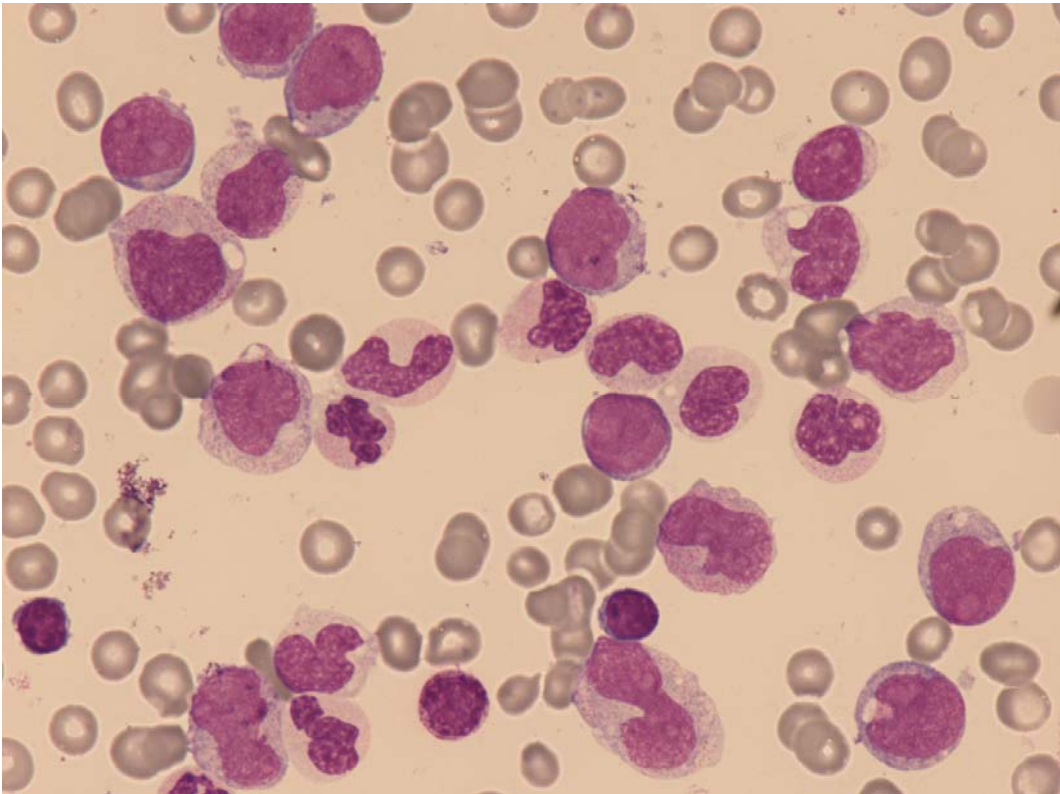


Fig 2: Bone marrow with granulocytic dysplasia promonocytes and monoblasts.

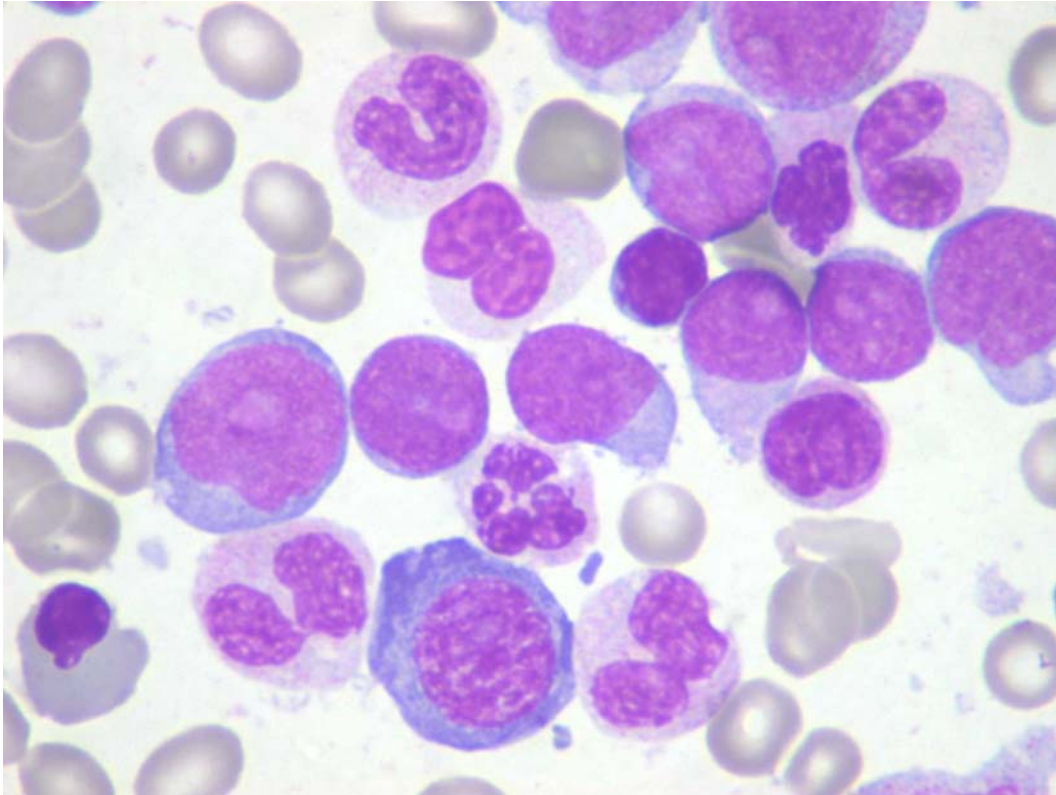


Fig 3: Bone marrow with granulocytic and erythroid dysplasia and monoblasts.

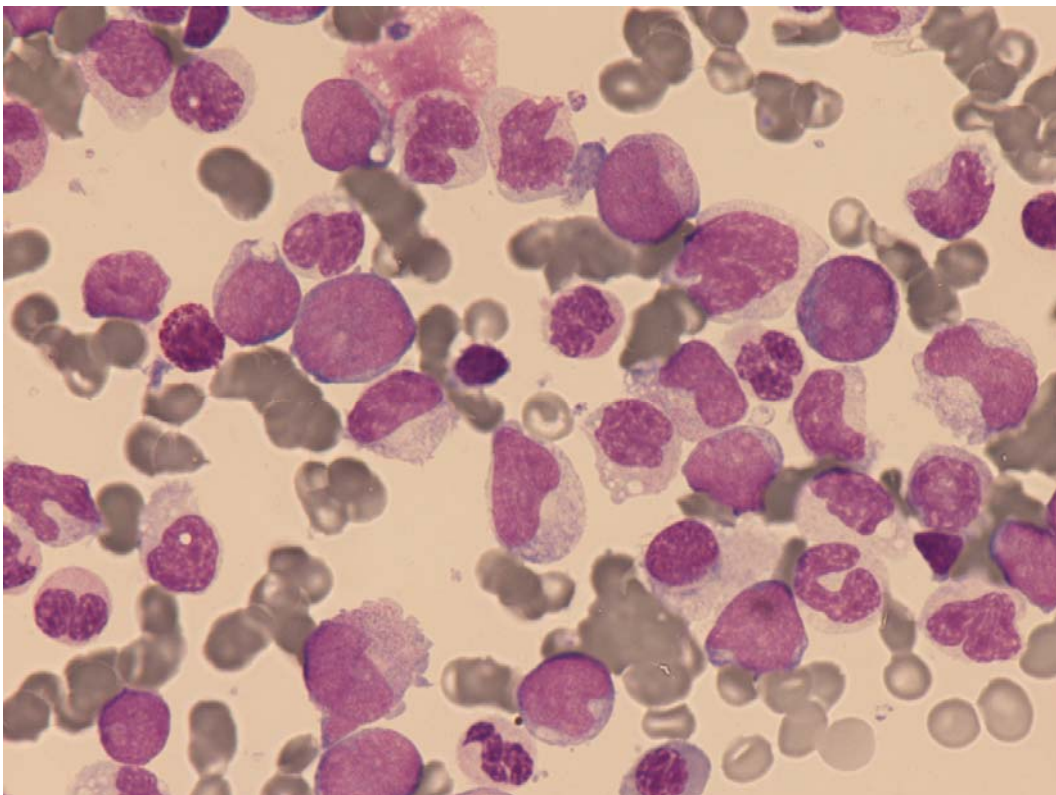


Fig 4: Bone marrow with granulocytic dysplasia, basophililia and myeloblasts.

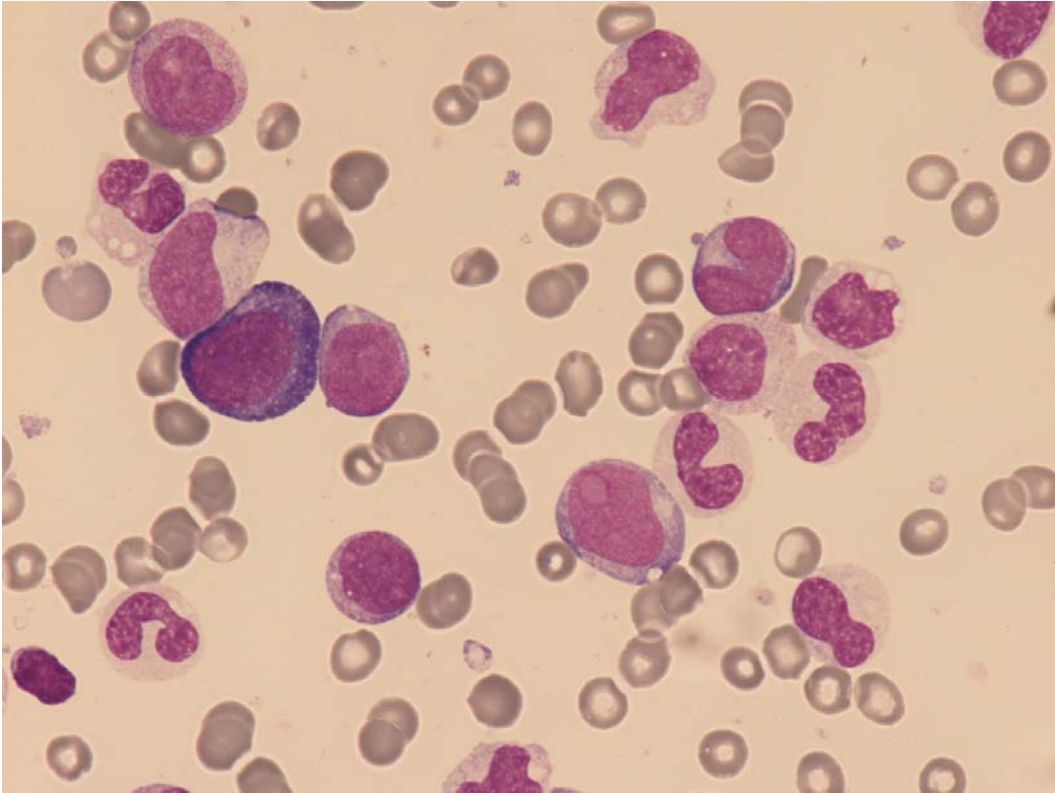


Fig 5: Bone marrow with granulocytic and erythroid dysplasia and monooblasts.

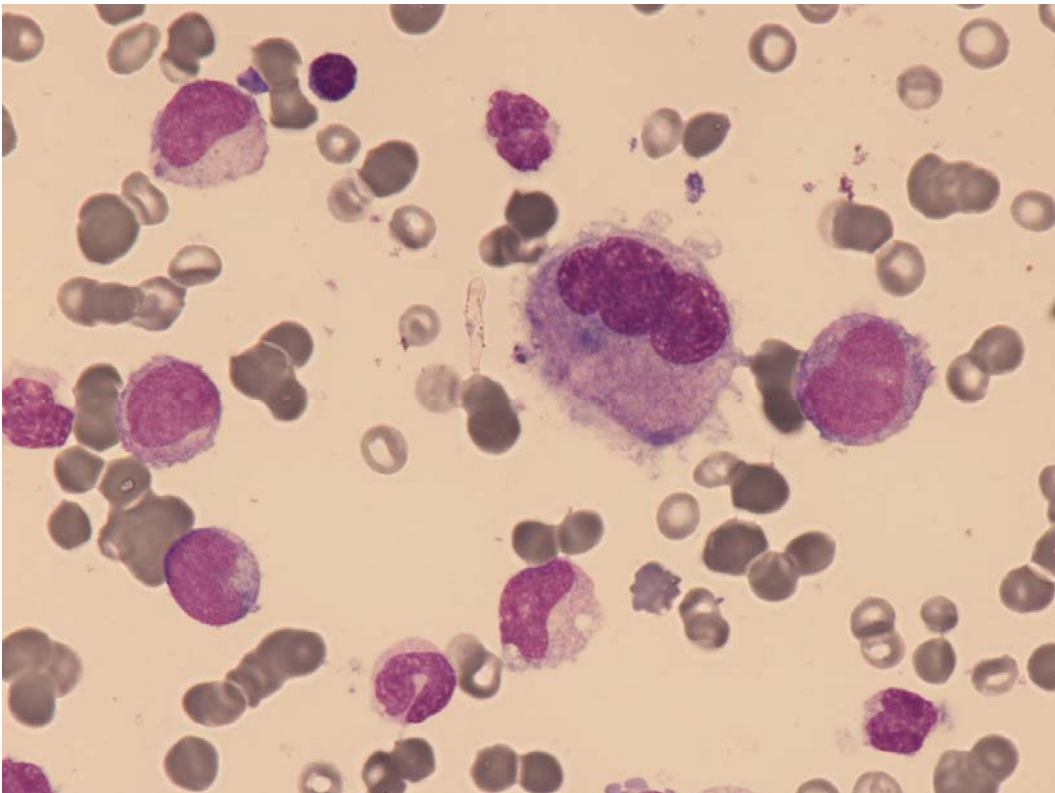


Fig 6: Bone marrow with granulocytic and megakaryocytic dysplasia and monocytic blasts.

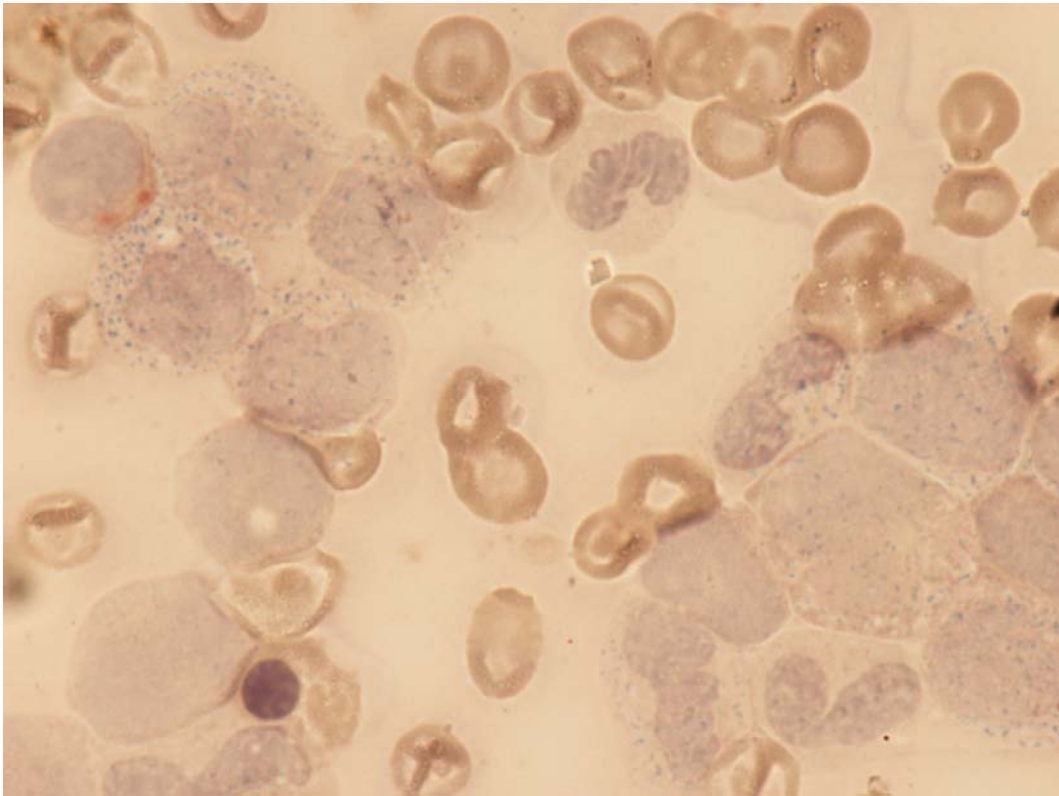


Fig 7: Blasts CAE negatives. Blast ANBE positive.

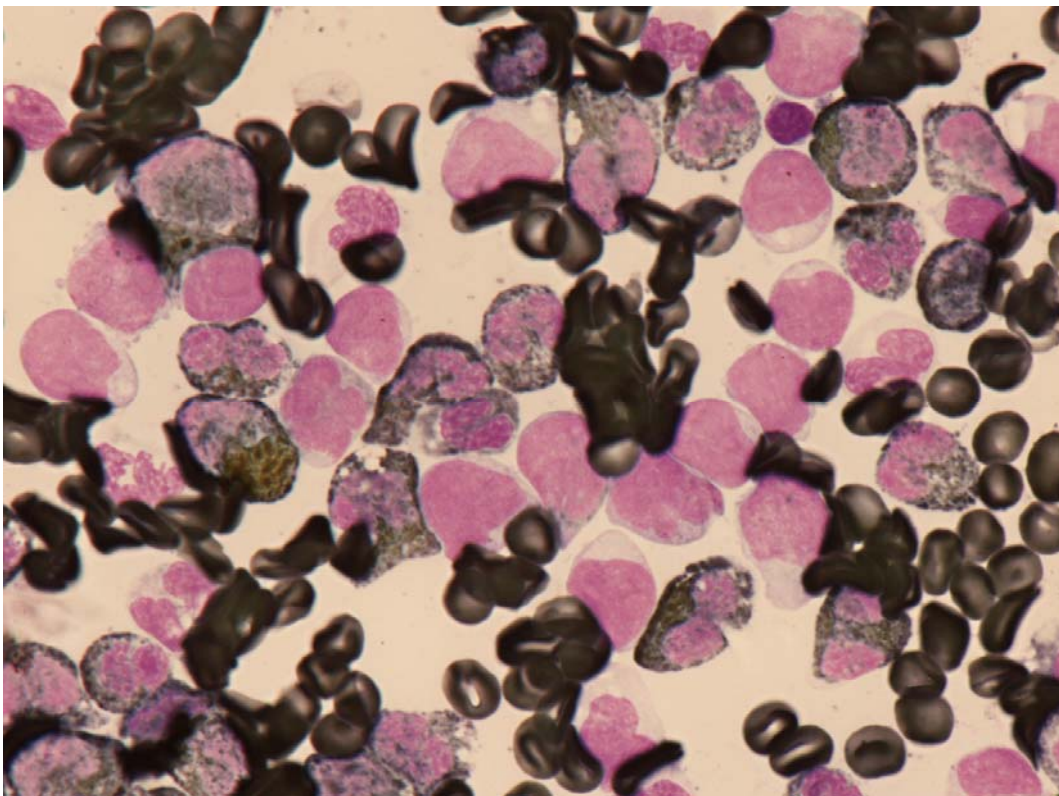


Fig 8: Blasts MPX negatives.

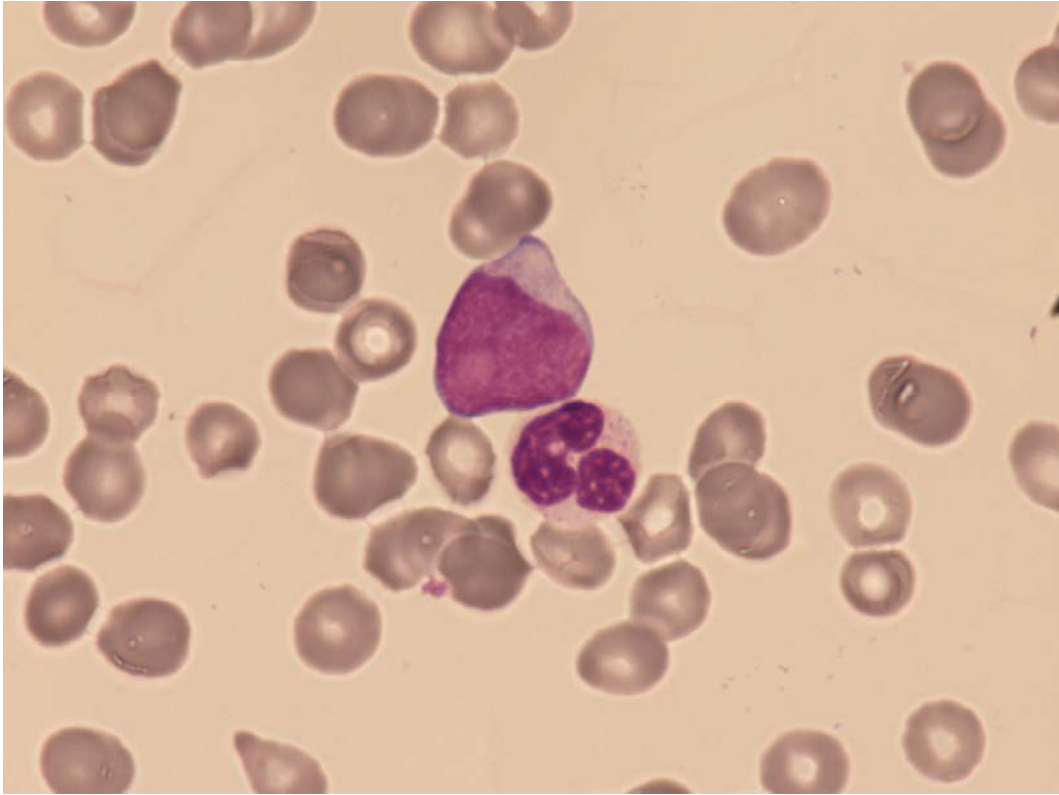


Fig 9: Peripheral blood blast with fine Auer rod.