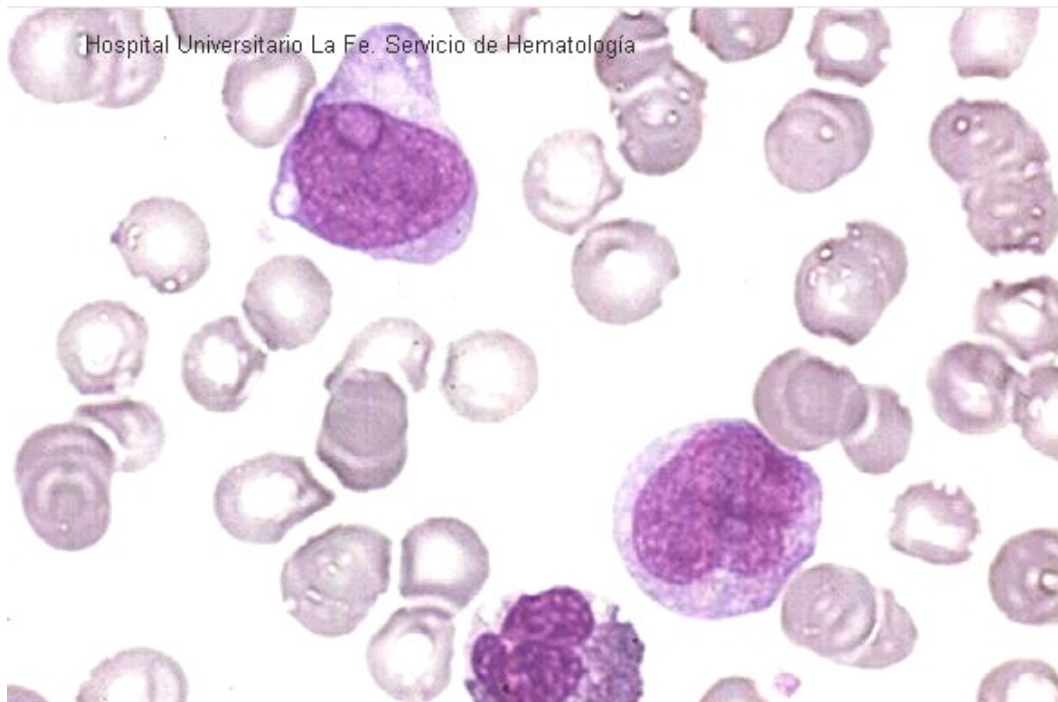
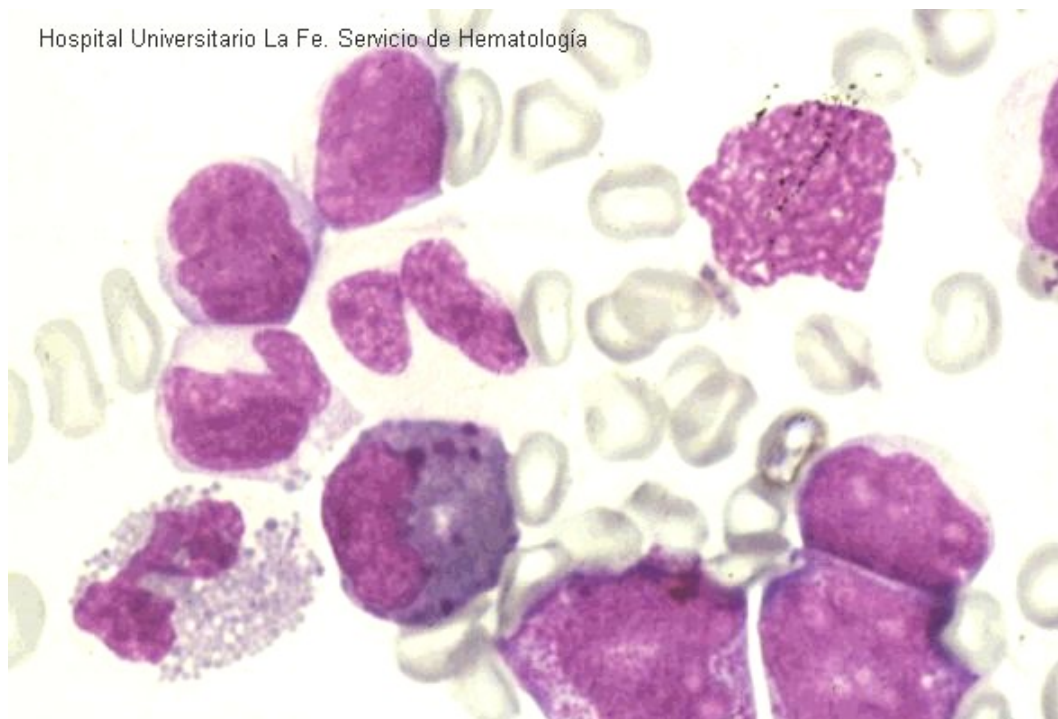


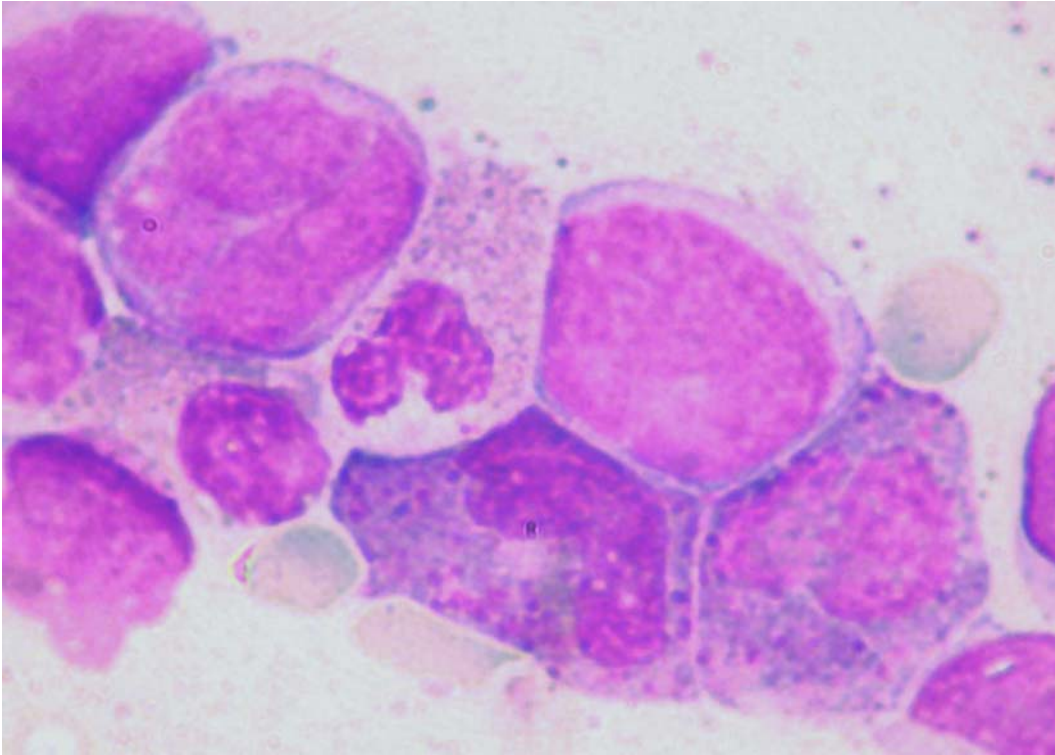
**Acute myeloid leukaemia with  $inv(16)(p13;q22)$  or  $t(16;16)(p13;q22)$ ; (CBFb/MYH11)**



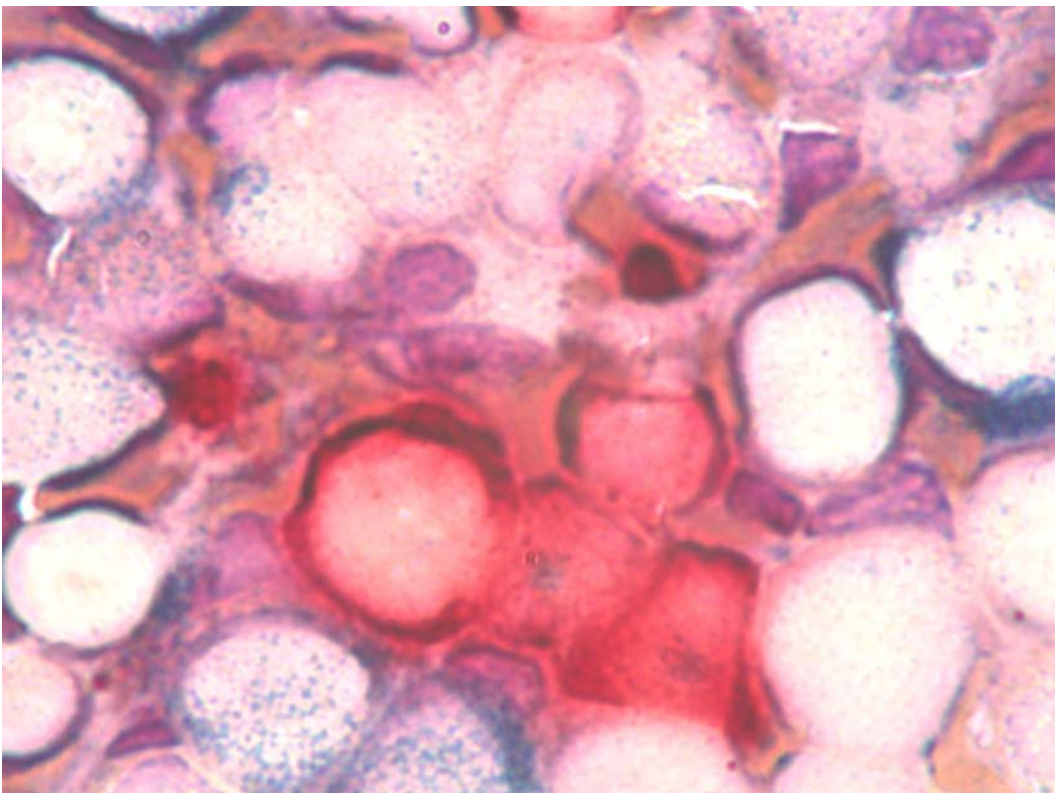
**Fig 1:** Myeloblast, monoblast and eosinophil in peripheral blood.



**Fig 2:** Blasts, promonocyte, eosinophils with some granules larger and purple-violet colour and dysplastic neutrophils in bone marrow.



**Fig 3:** Blast and eosinophils with some granules larger and purple-violet colour in bone marrow.



**Fig 4:** Double esterase reaction: naphthol-ASD-chloracetate esterase (blue granules) positive in matures neutrophils and abnormal eosinophils; alpha-naphthyl-butirate positive in monoblasts and promonocytes in bone marrow.