

Acute myeloid leukaemia with t(8;21)(q22;q22); (AML1 (CBF α)/ETO)

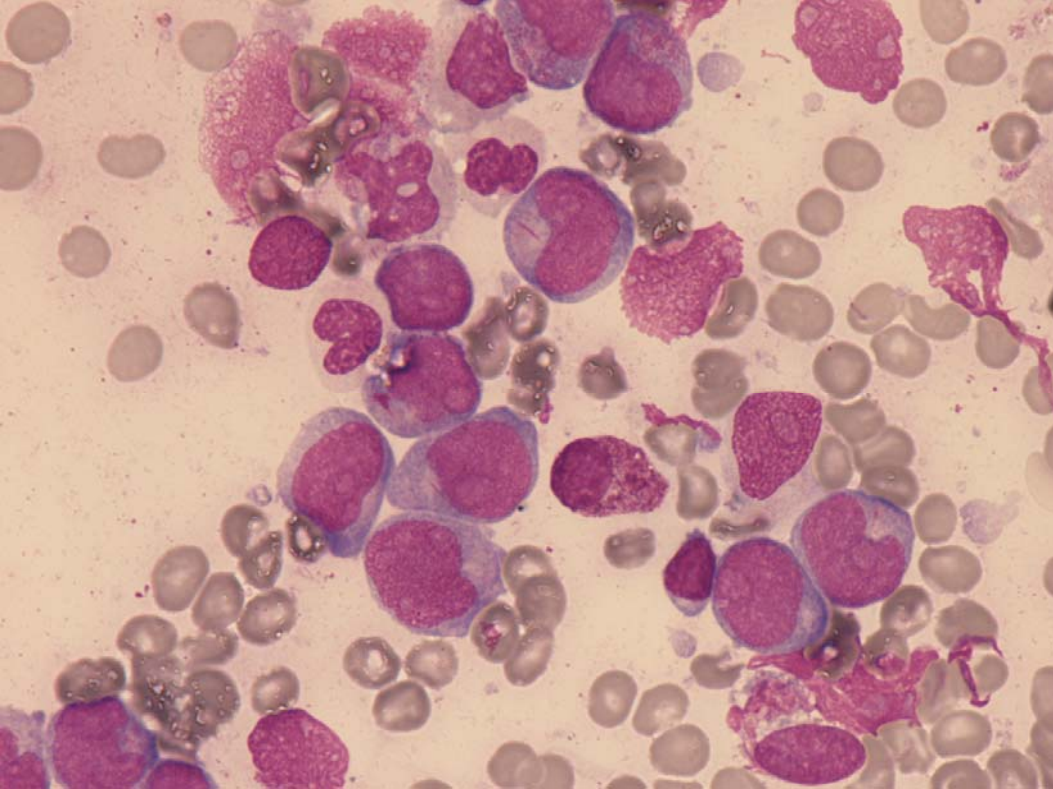


Fig.1: Large blasts with abundant basophilic cytoplasm, and perinuclear clearing and frequently single Auer rods.

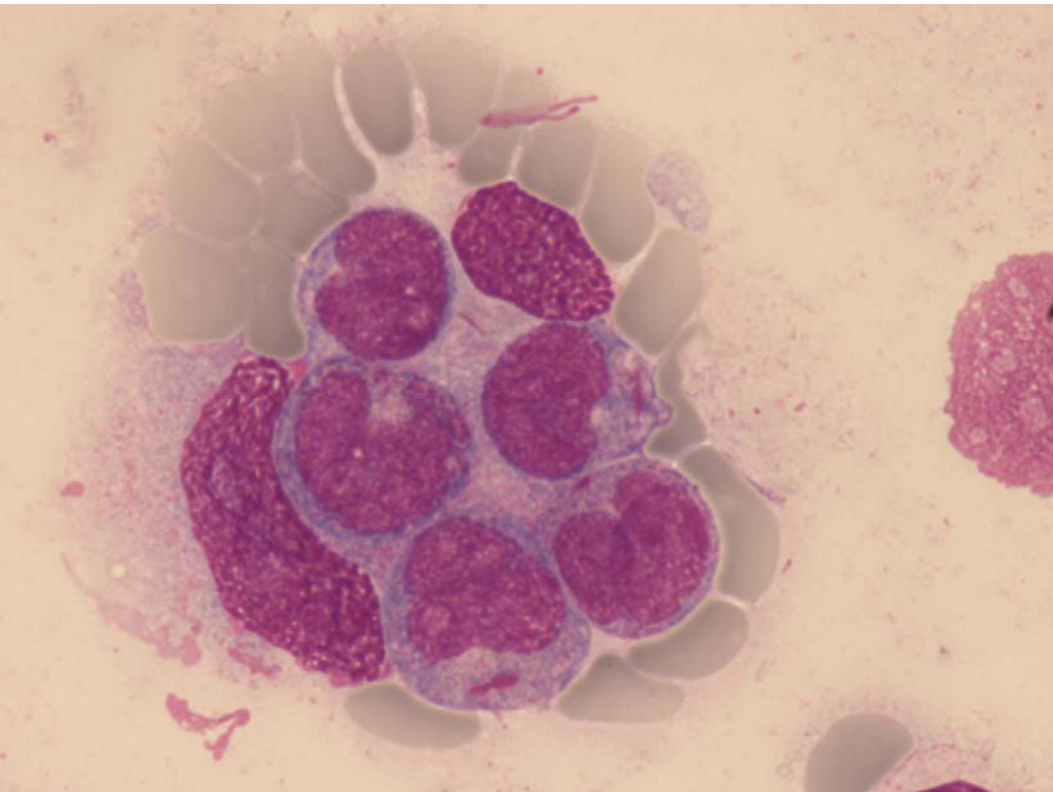


Fig.2: Large blasts with abundant basophilic cytoplasm, and frequently single Auer rods.

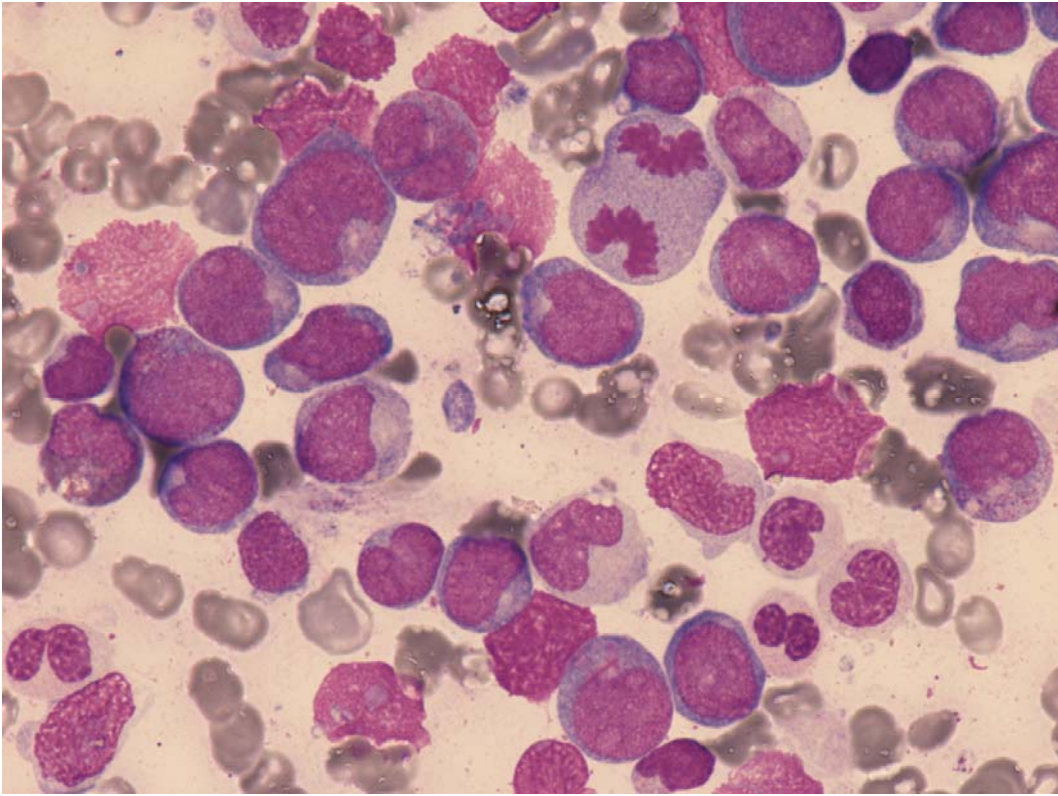


Fig.3: Large blasts with abundant basophilic cytoplasm, and perinuclear clearing and some azurophilic granules and single Auer rods; mature neutrophils with dysplasia.

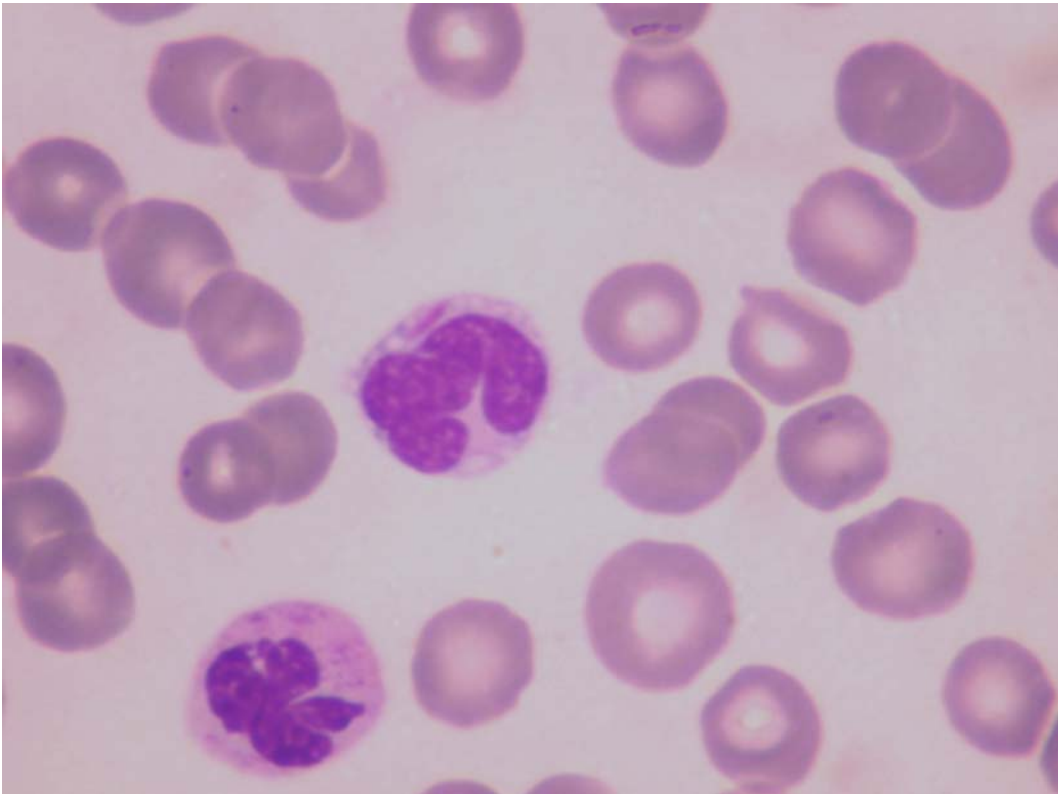


Fig.4: Auer rod in mature neutrophil.