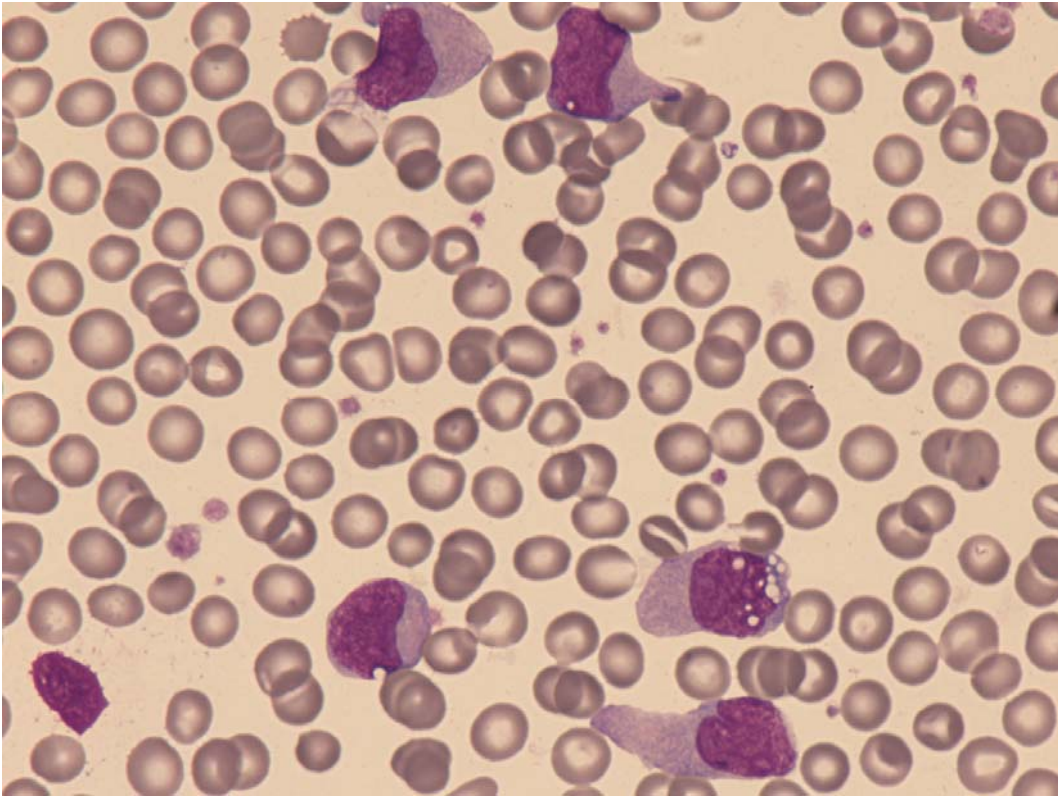
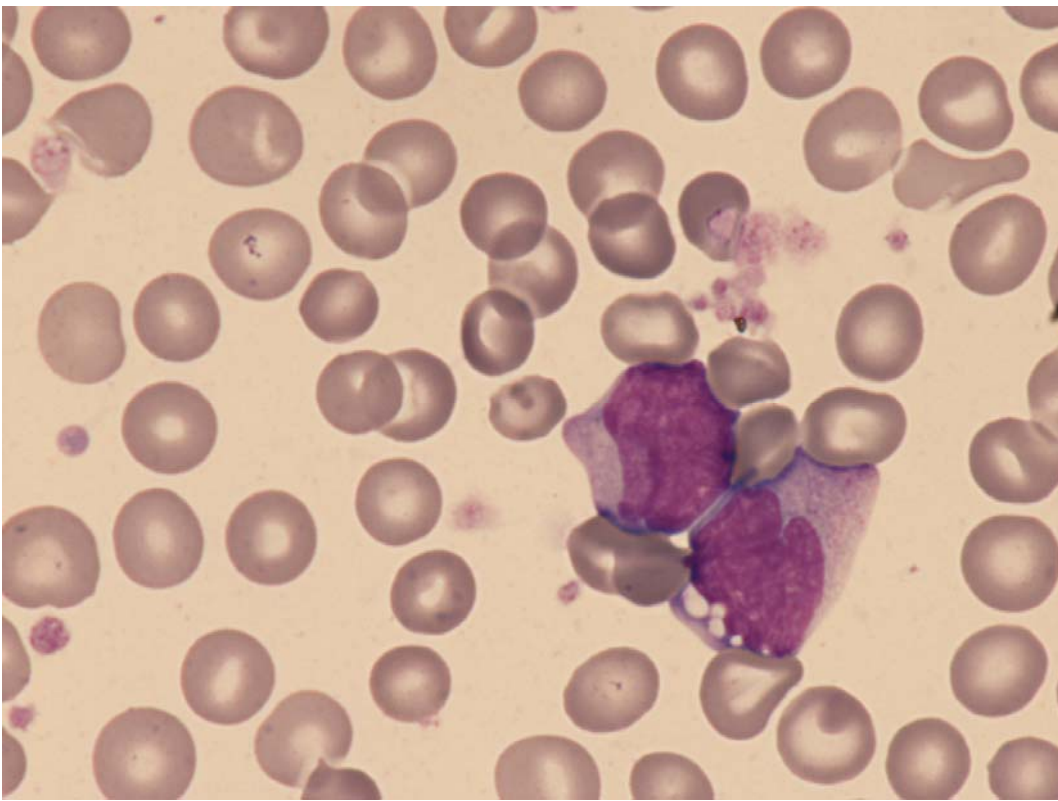


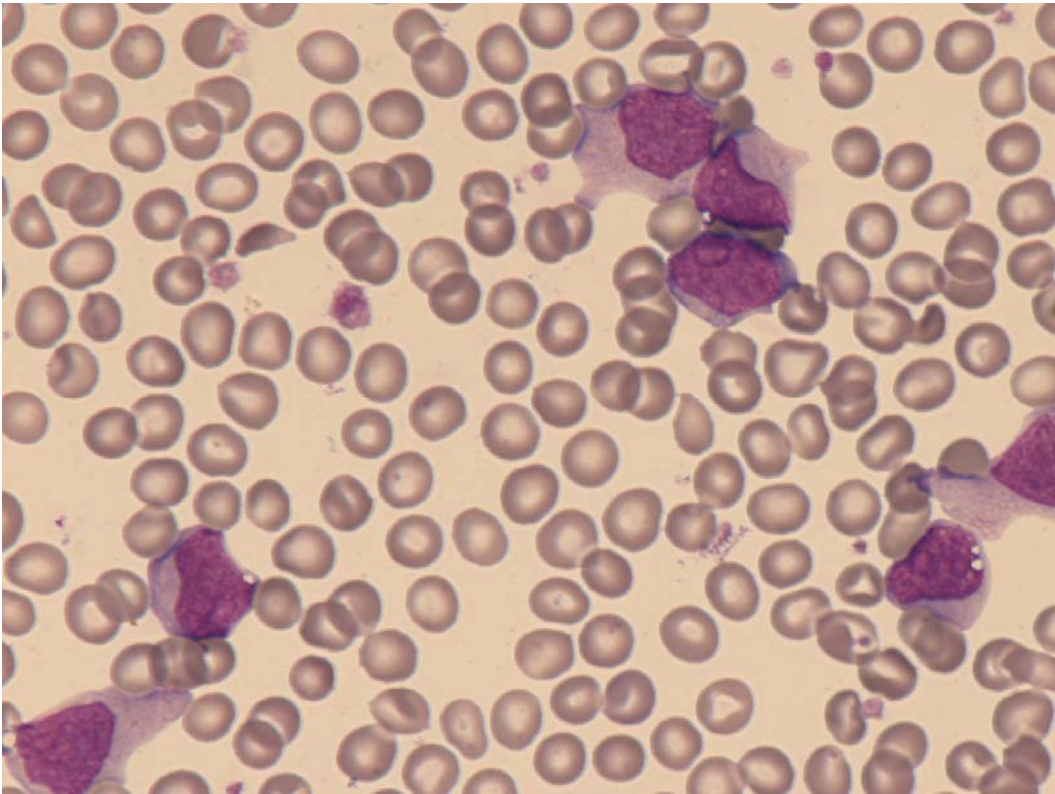
## Acute monoblastic and monocytic leukaemia



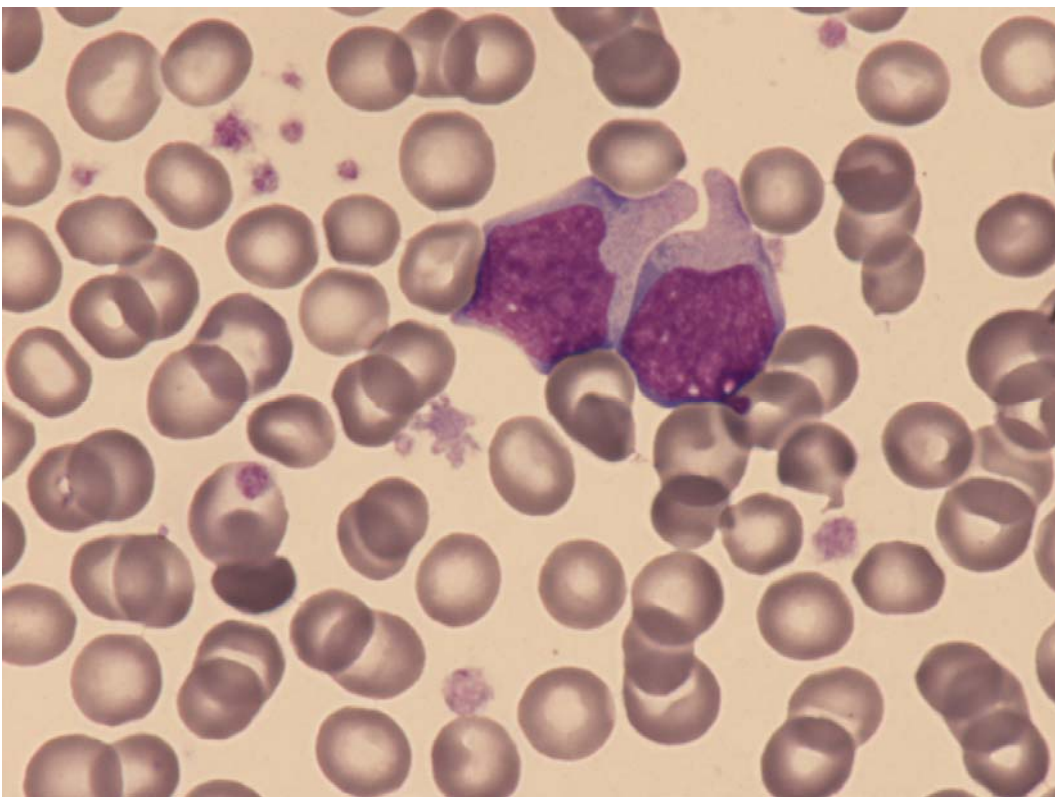
**Fig 1:** Monoblasts in peripheral blood.



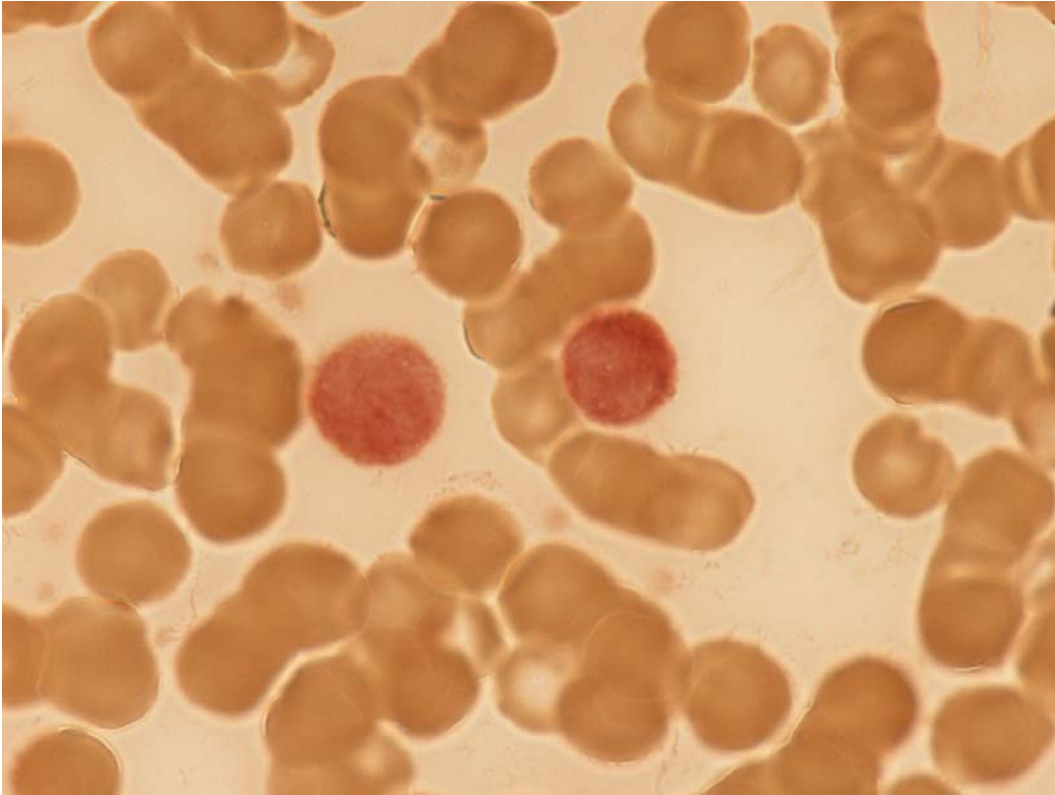
**Fig 2:** Monoblasts in peripheral blood.



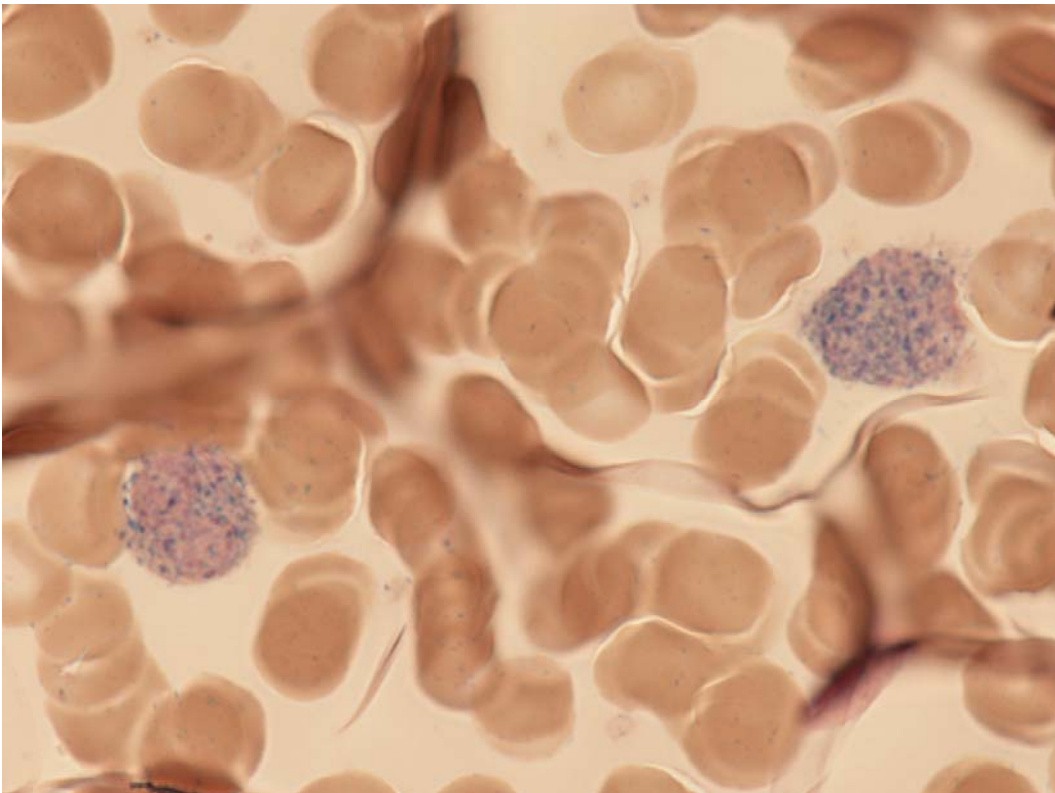
**Fig 3.** Monoblasts in peripheral blood.



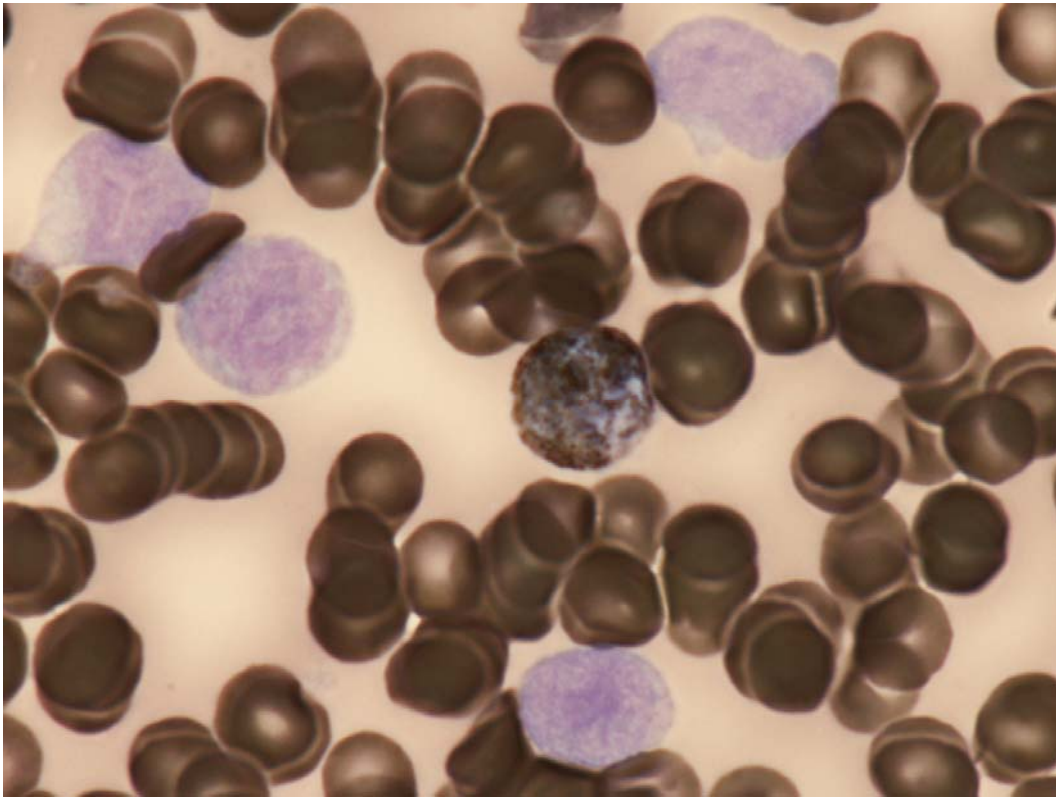
**Fig 4.** Monoblasts in peripheral blood.



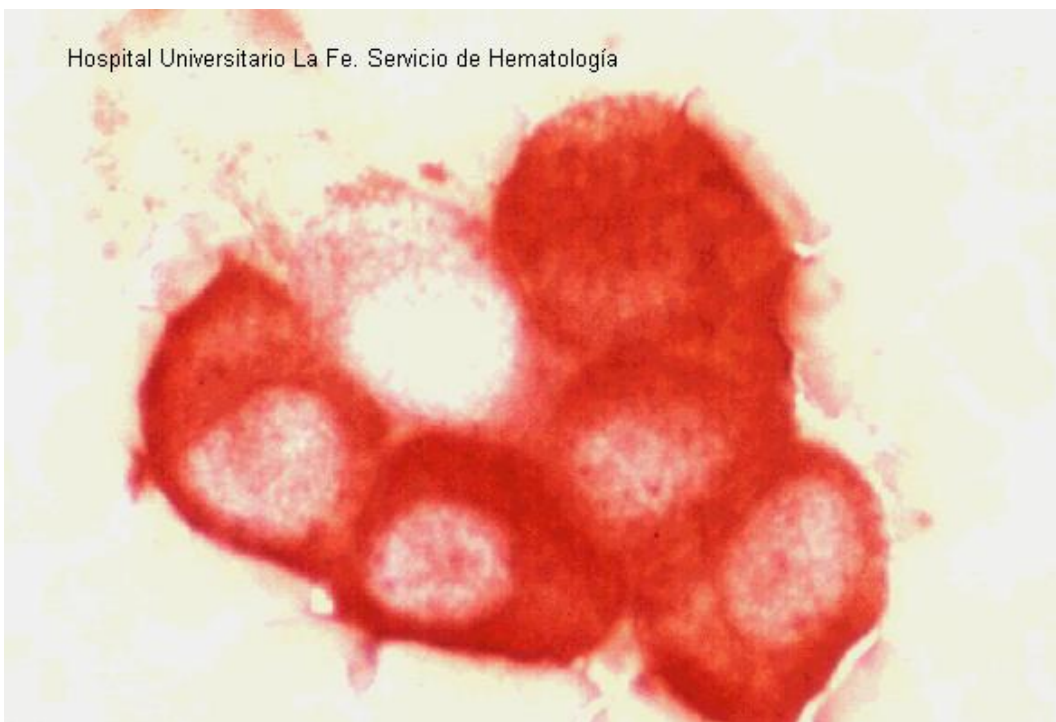
**Fig 5.** Monoblasts in peripheral blood. Intense non specific esterase (butyrate) positivity.



**Fig 6:** Monoblasts in peripheral blood. Non specific esterase (NASDA).



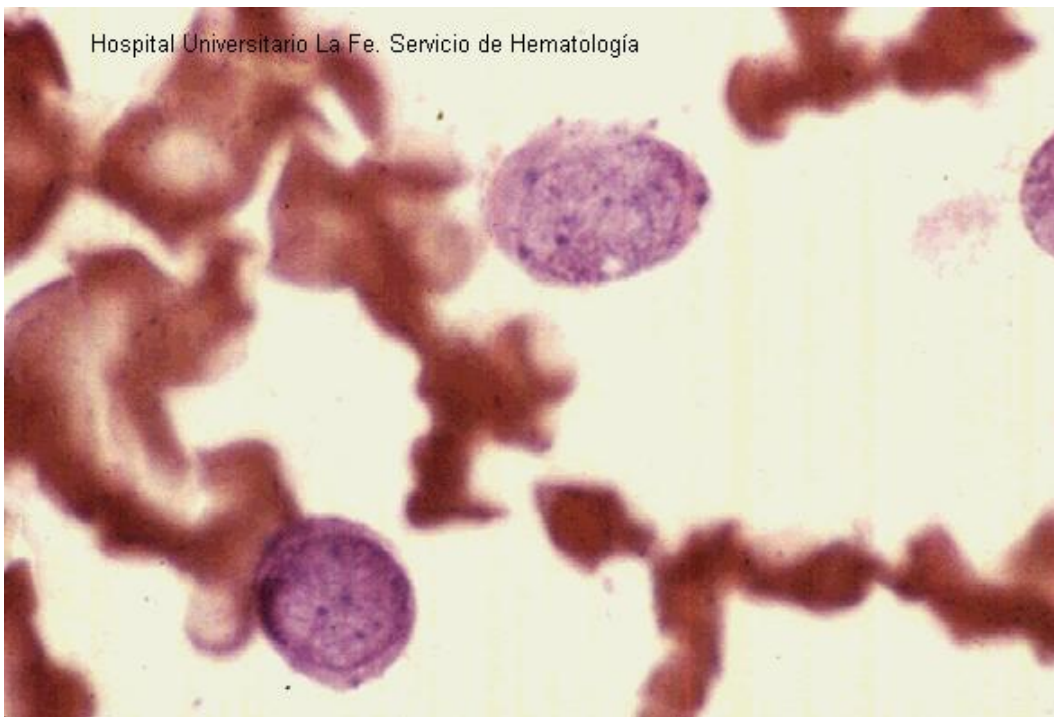
**Fig 7.** Monoblasts in peripheral blood. MPO negativity.



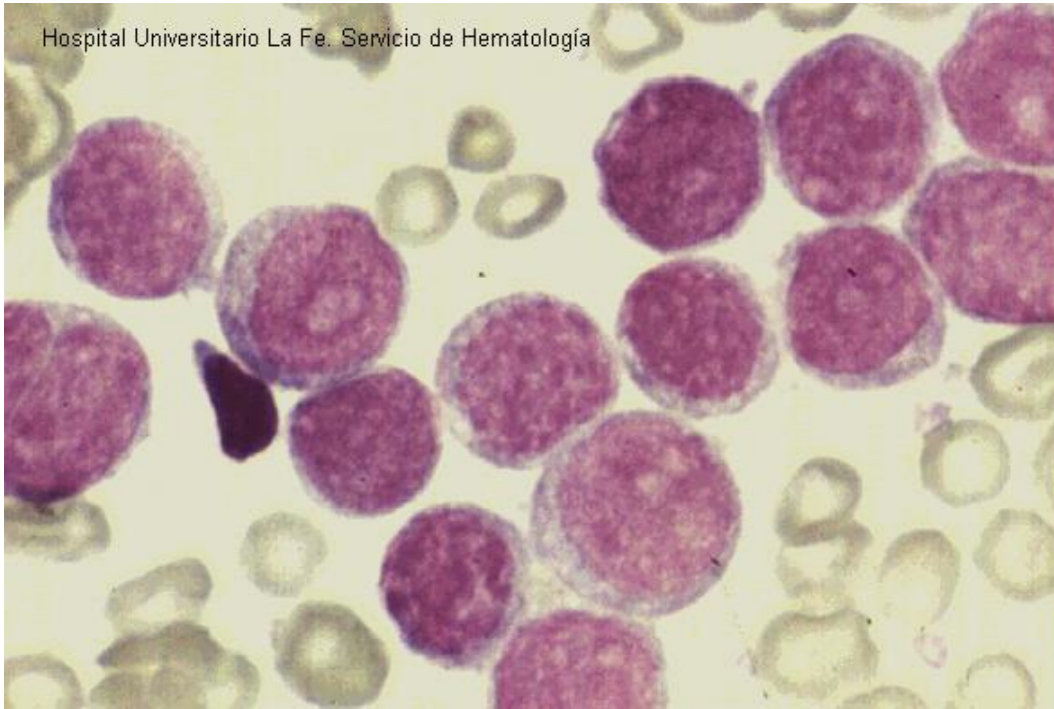
**Fig 8:** ANAE positive.



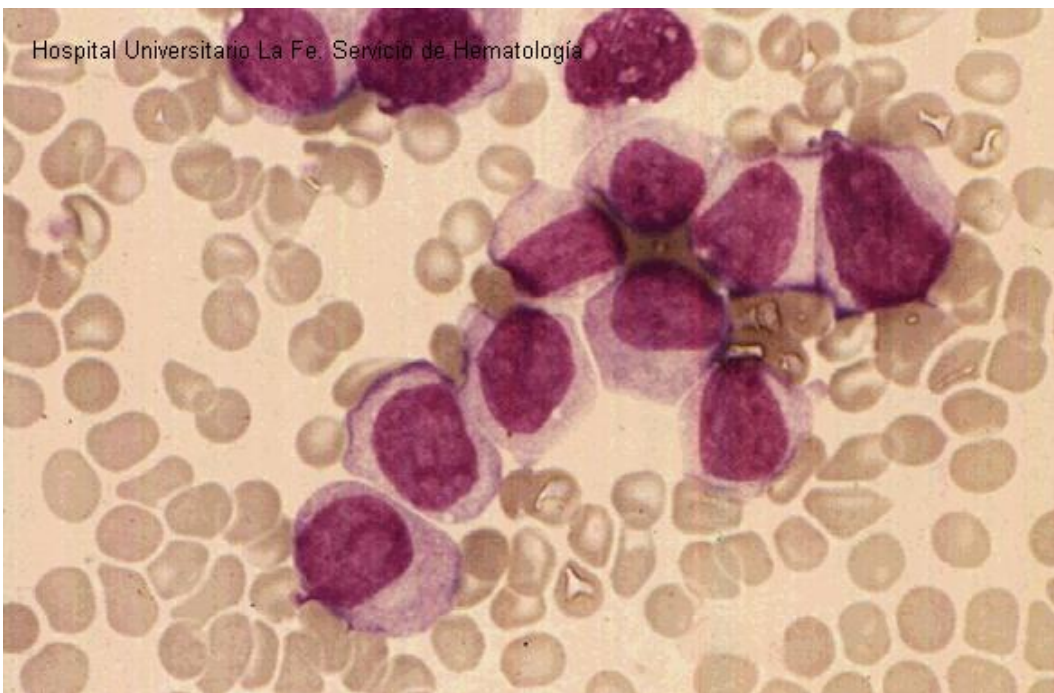
**Fig 9:** ANAE positive.



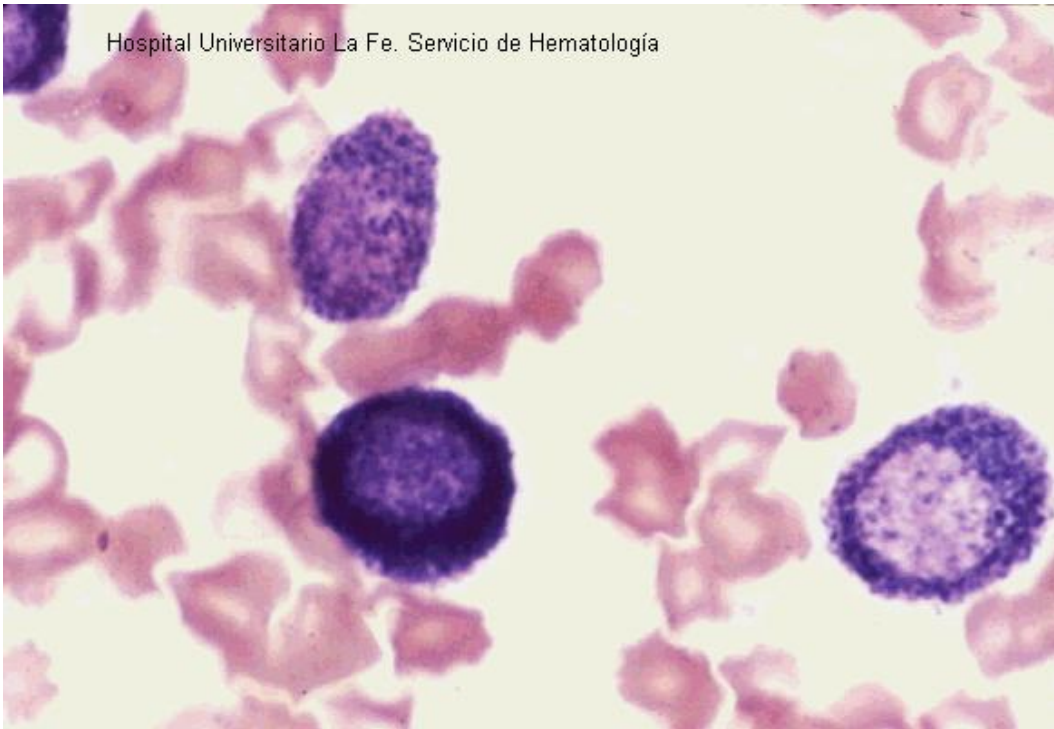
**Fig 10:** NASDA inhibited with FNa.



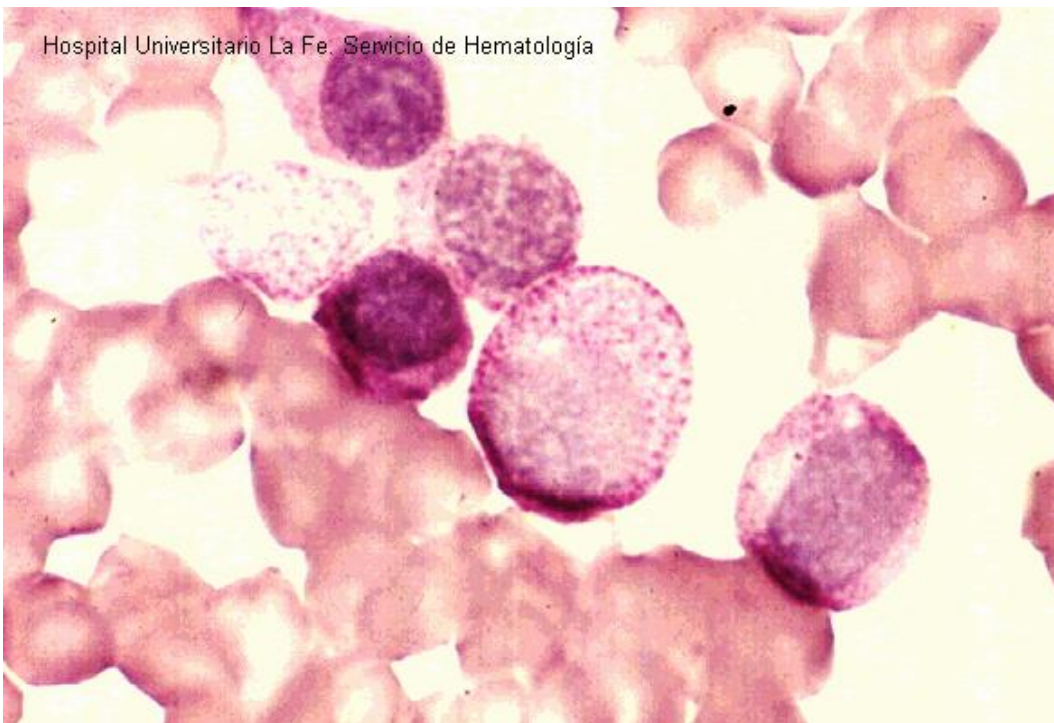
**Fig 11:** Bone marrow.



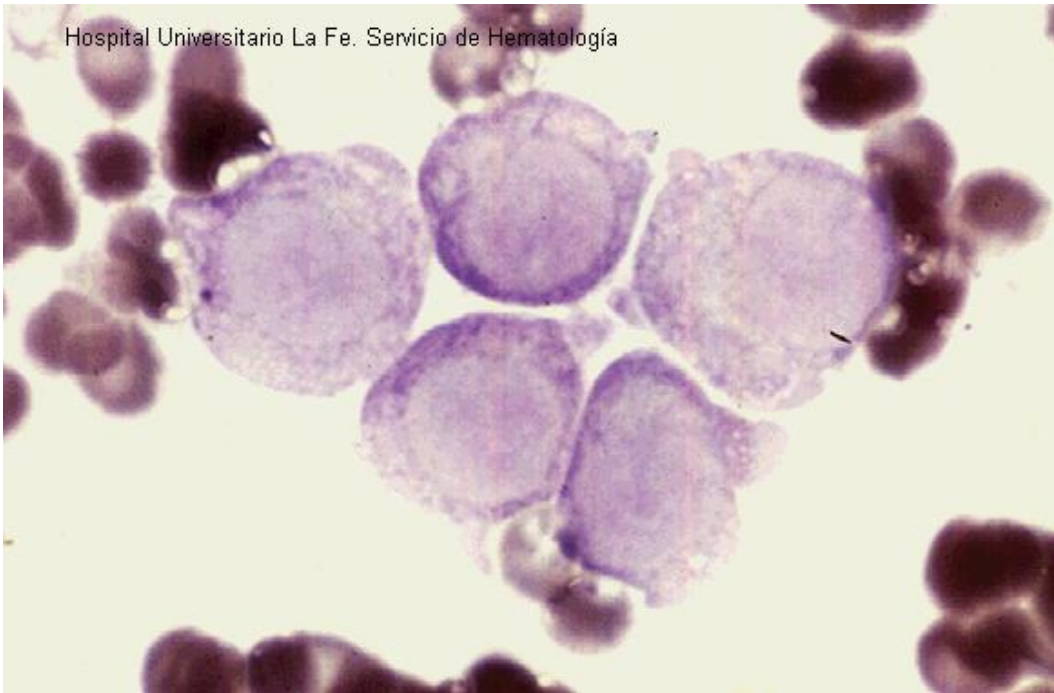
**Fig 12:** Bone marrow.



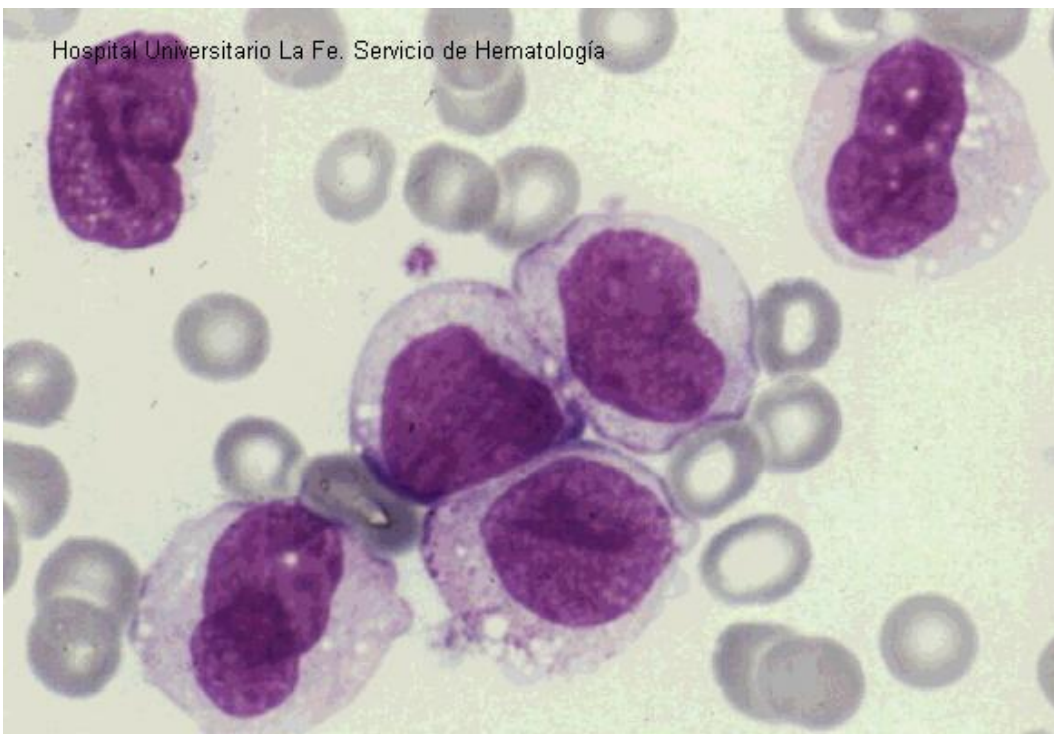
**Fig 13:** NASDA positive inhibited with FNa.



**Fig 14:** Pas granular positivity.



**Fig 15:** peroxidase, unic positivity phi bodie).



**Fig 16:** Monoblasts well differentiated.



Hospital Universitario La Fe. Servicio de Hematología



**Fig 17:** Peripheral blood.