

Acute myelomonocytic leukaemia

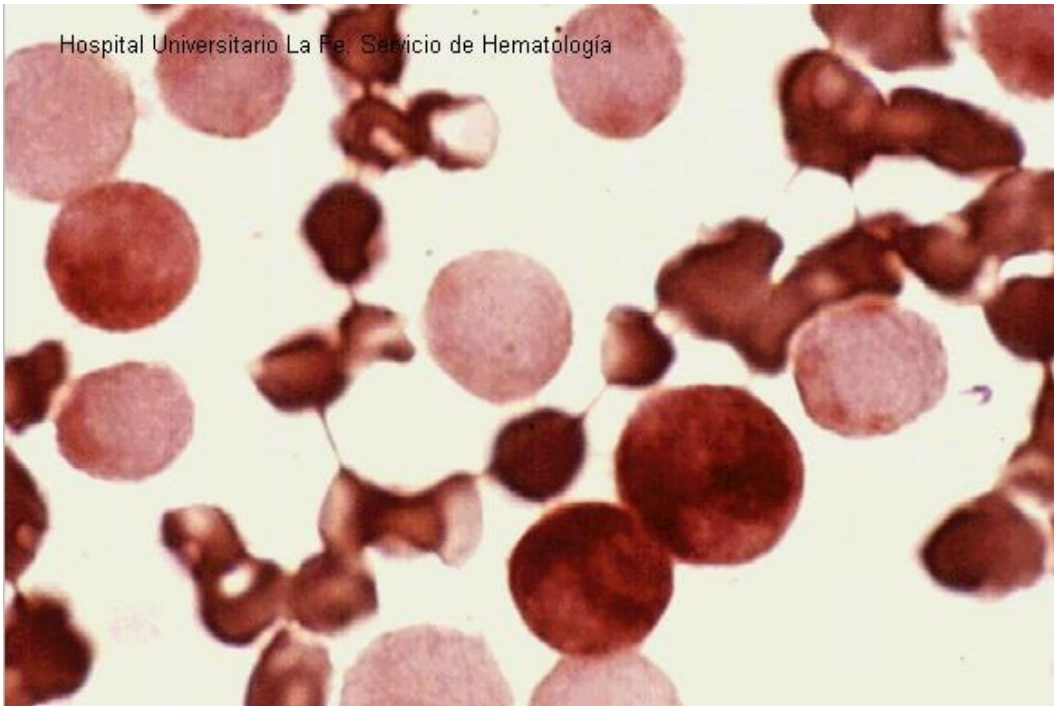


Fig 1: ANAE.

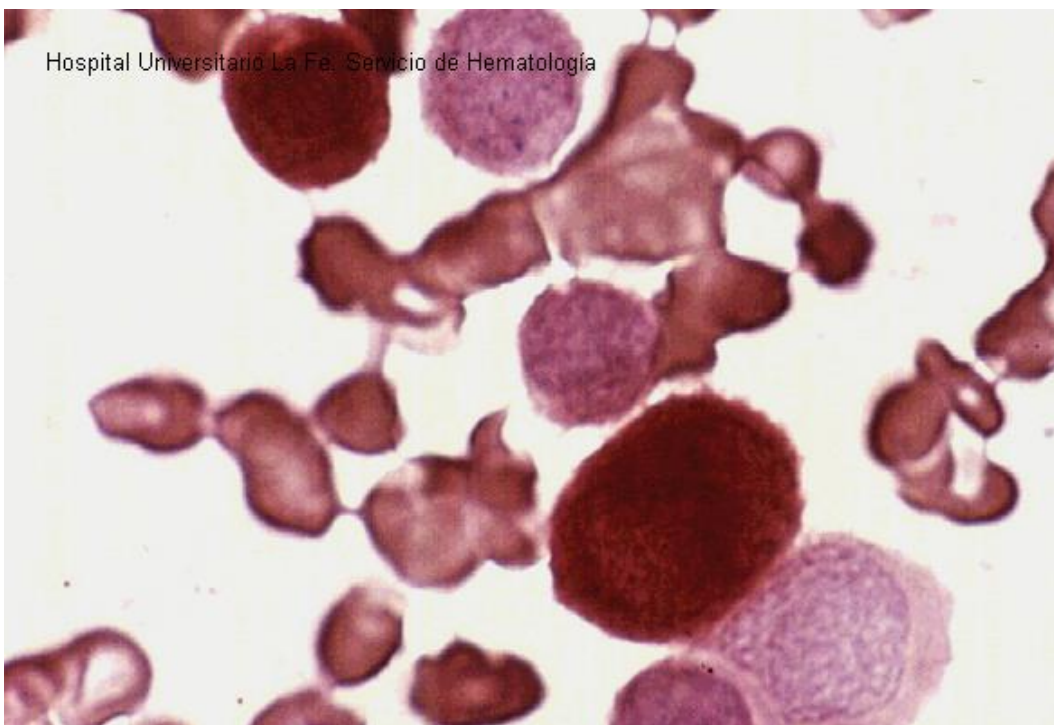


Fig 2: (ANBE pos-red-, CAE pos-blue).

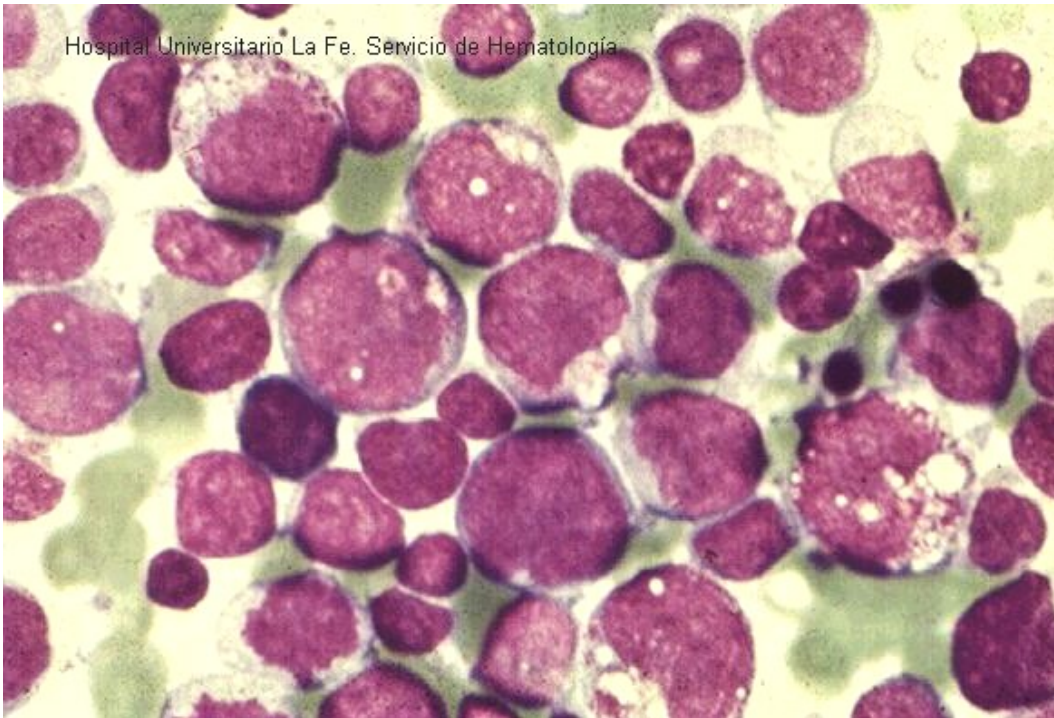


Fig 3: Bone marrow.

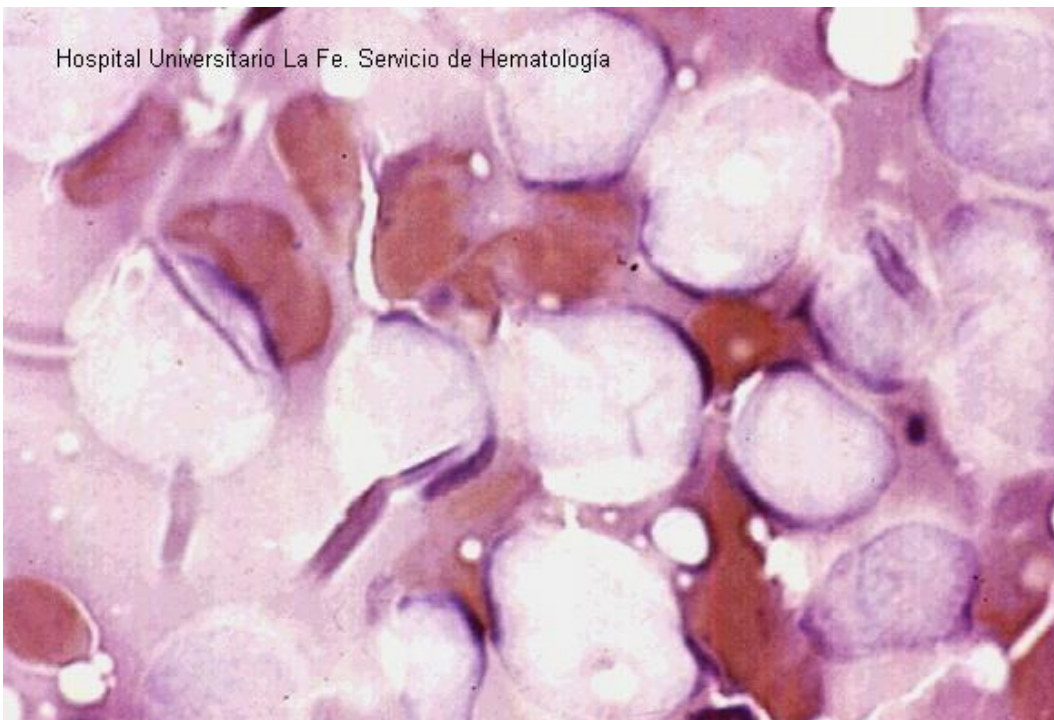


Fig 4: (NASDA inhibited with FNa).

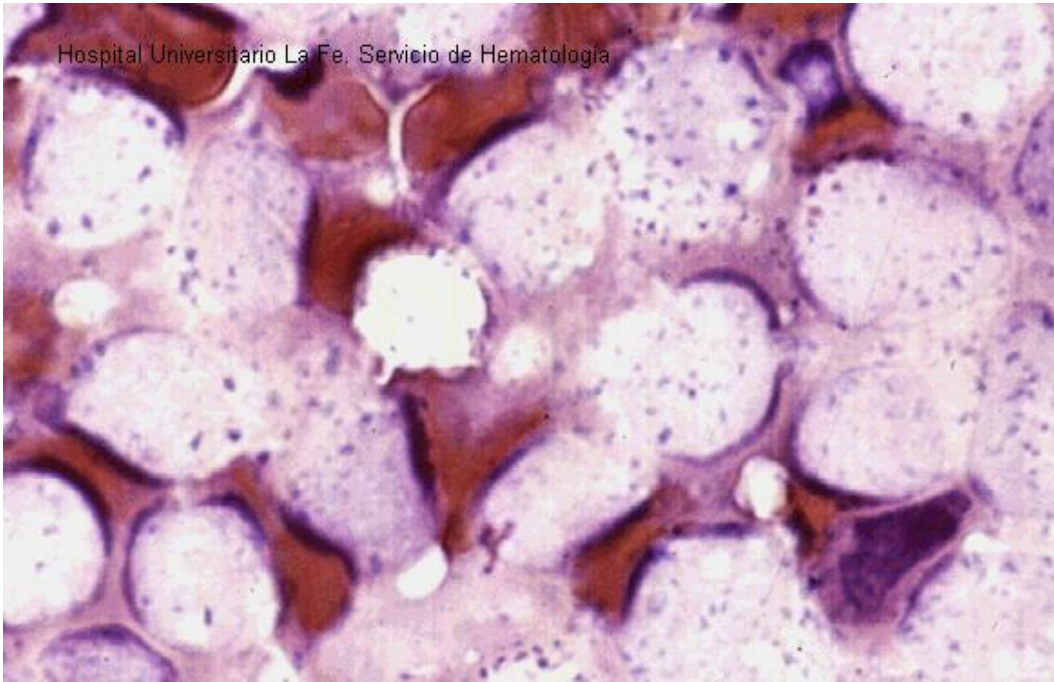


Fig 5: (NASDA positive inhibited with FNa).

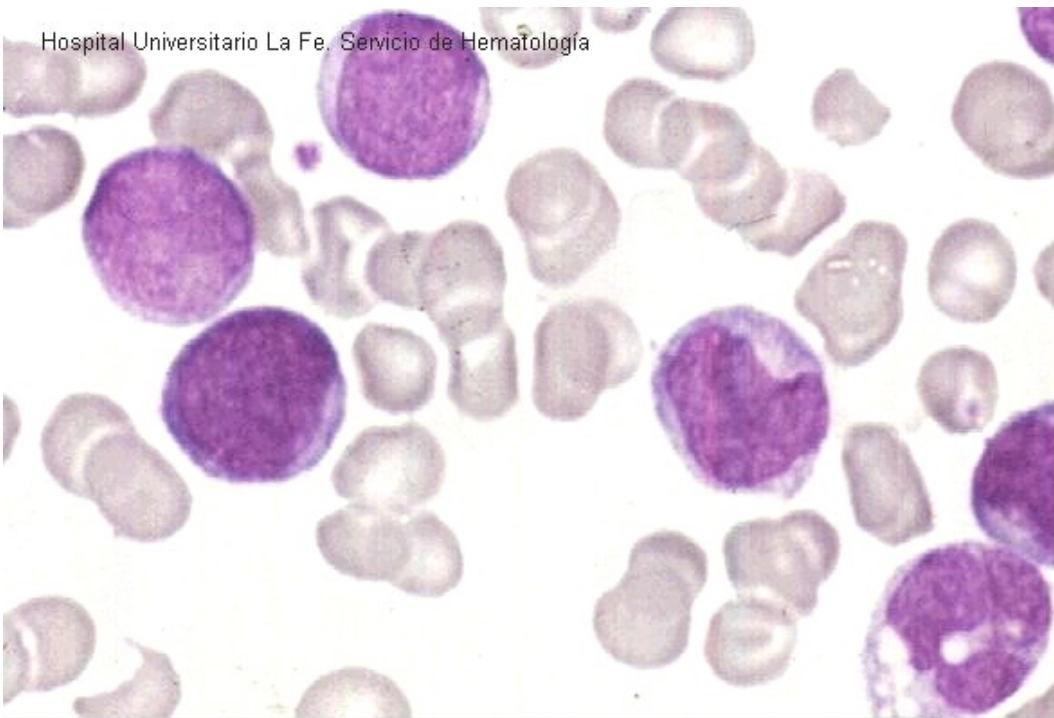


Fig 6: Blasts in peripheral blood.

Hospital Universitario La Fe. Servicio de Hematología

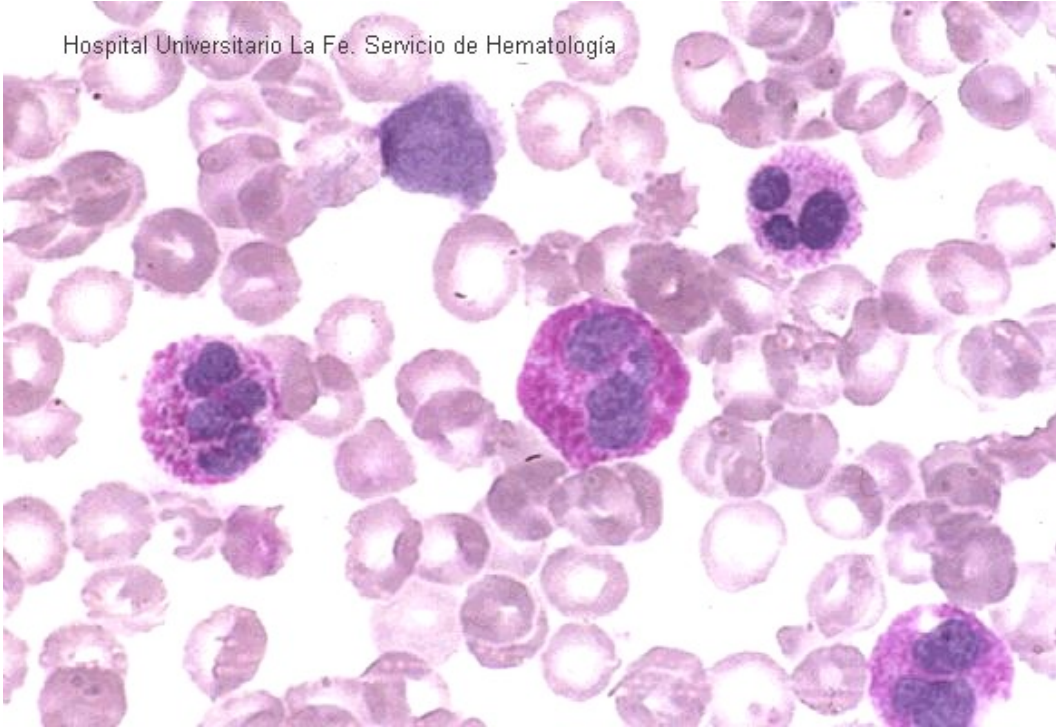


Fig 7: Blasts and eosinophils with Pas granular positivity.