

ACUTE BASOPHILIC LEUKAEMIA

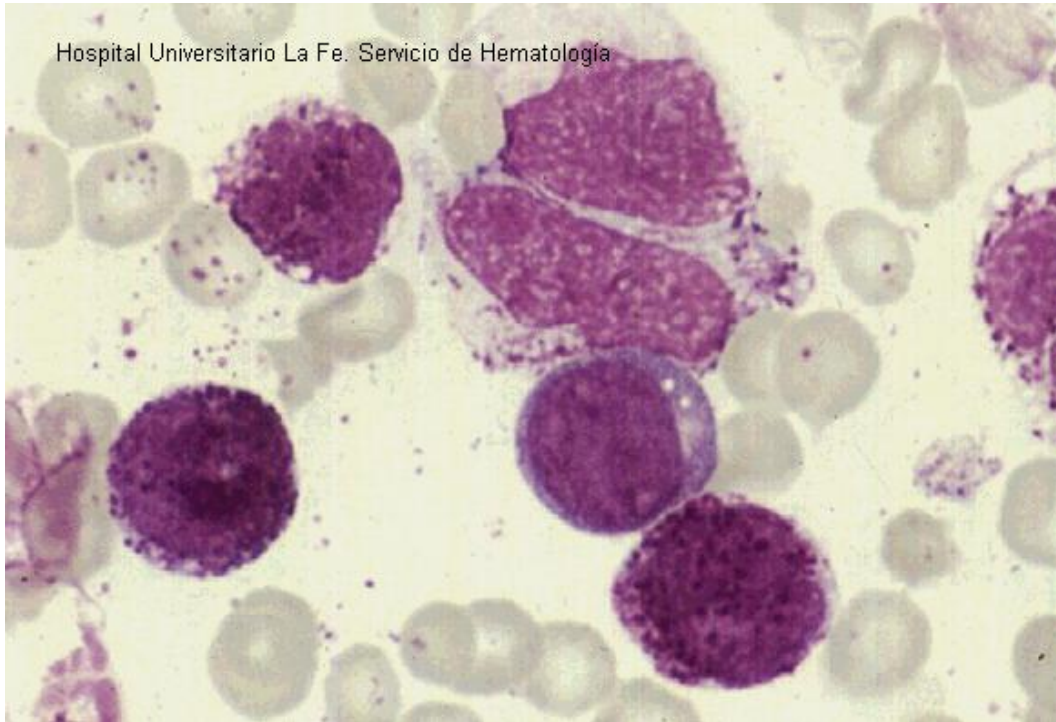


Fig 1: Mature basophils and blast with round nucleus and two nucleoli and cytoplasm basophilic vacuolated. (bone marrow).

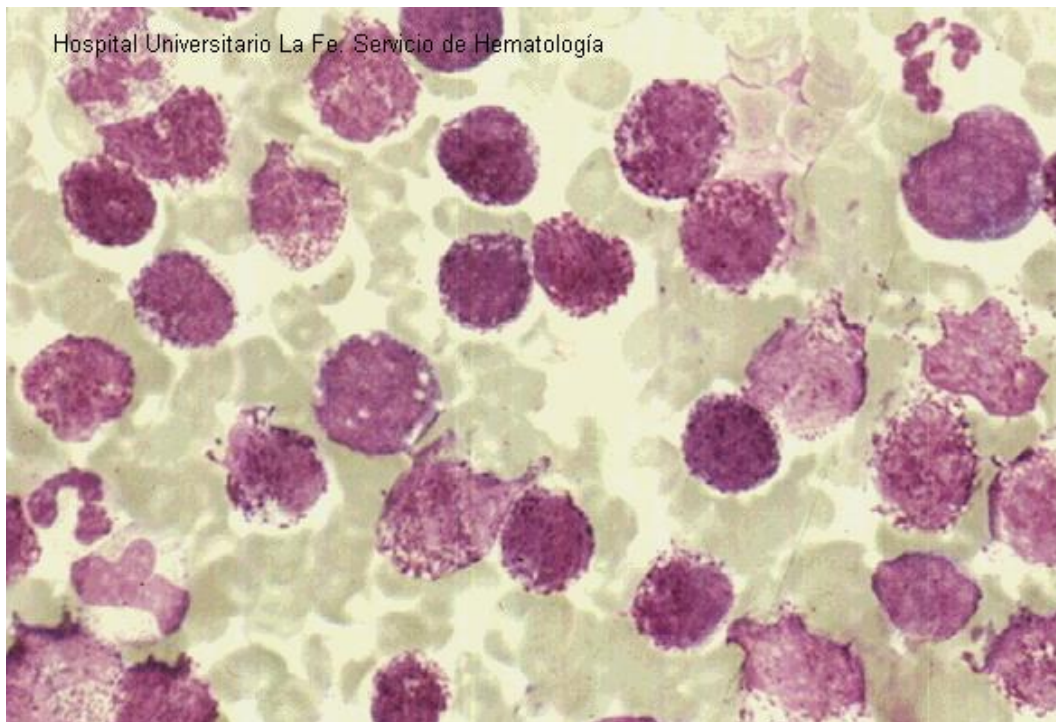


Fig 2: Mature basophils and blasts with scarce coarse basophilic granules (bone marrow).

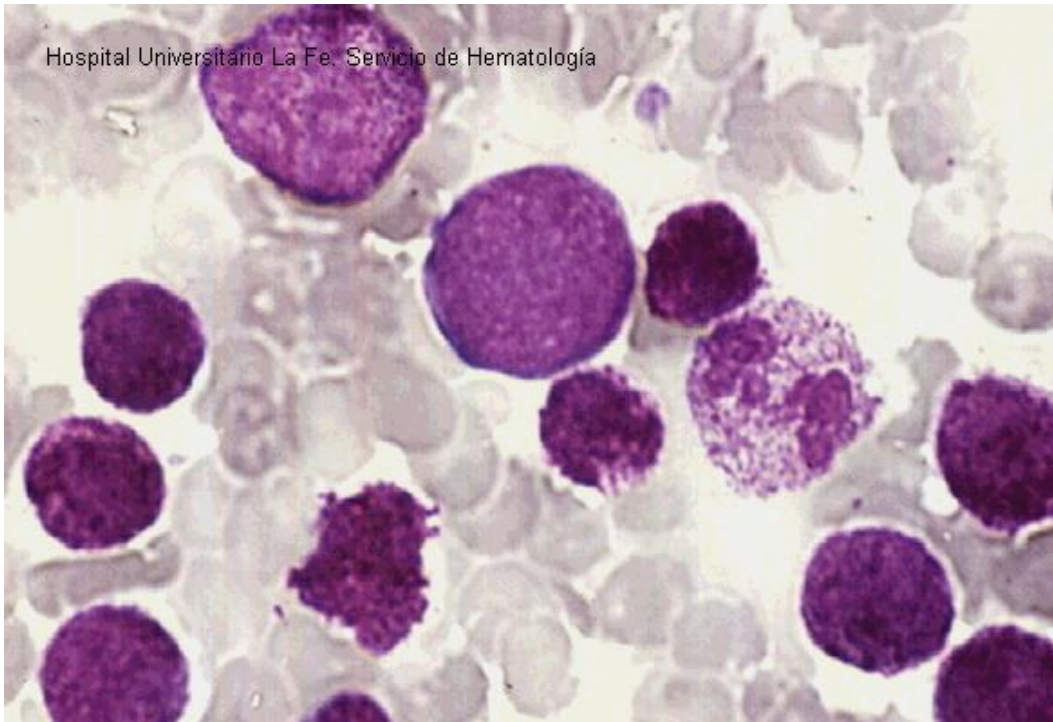


Fig 3: Mature basophils and blasts with scarce coarse basophilic granules (bone marrow).

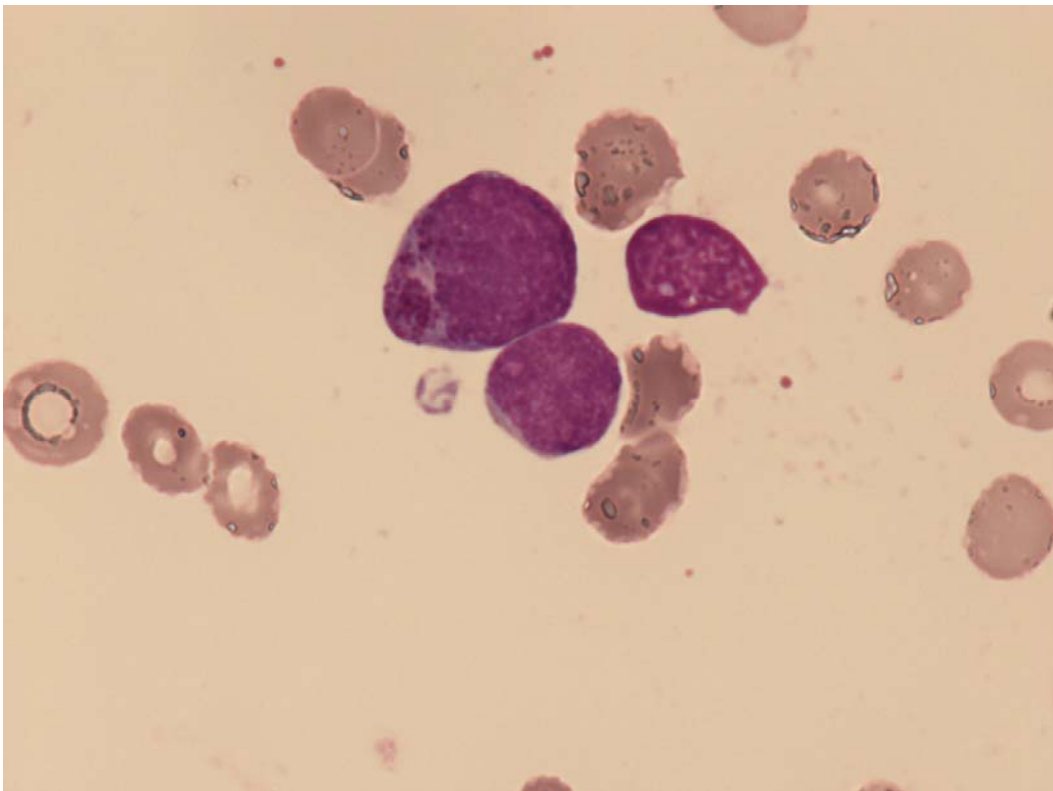


Fig 4: Blast with coarse basophilic granules and blast agranular (peripheral blood).

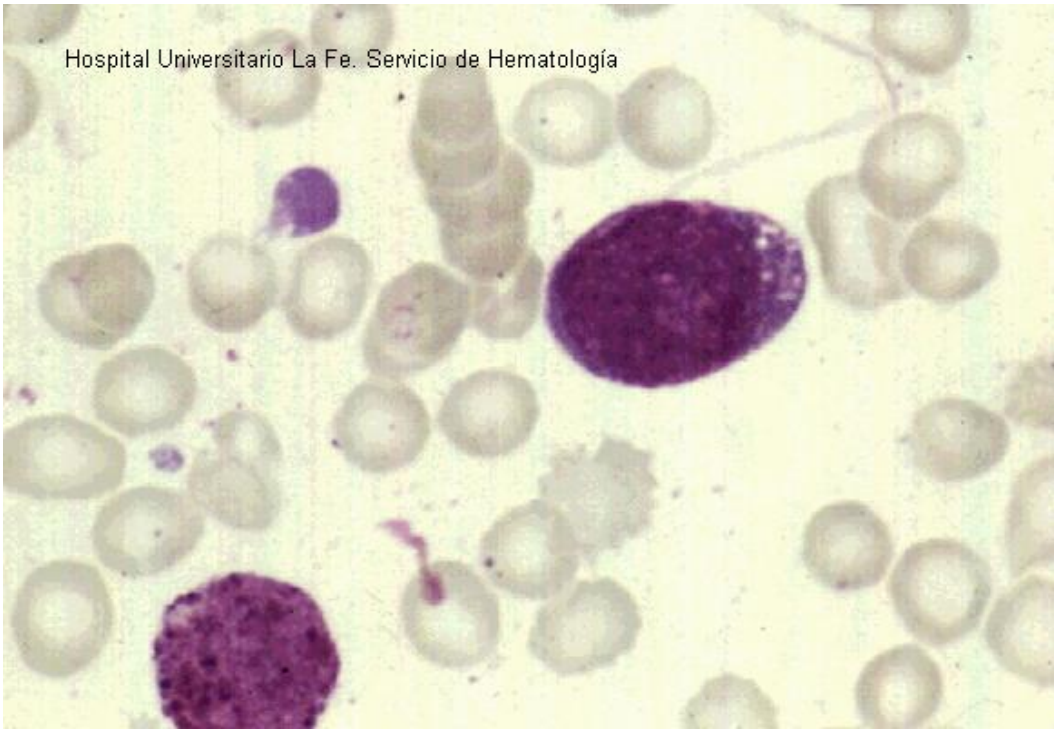


Fig 5: Mature basophil and blast with cytoplasm basophilic with vacuoles and scarce coarse basophilic granules (peripheral blood).

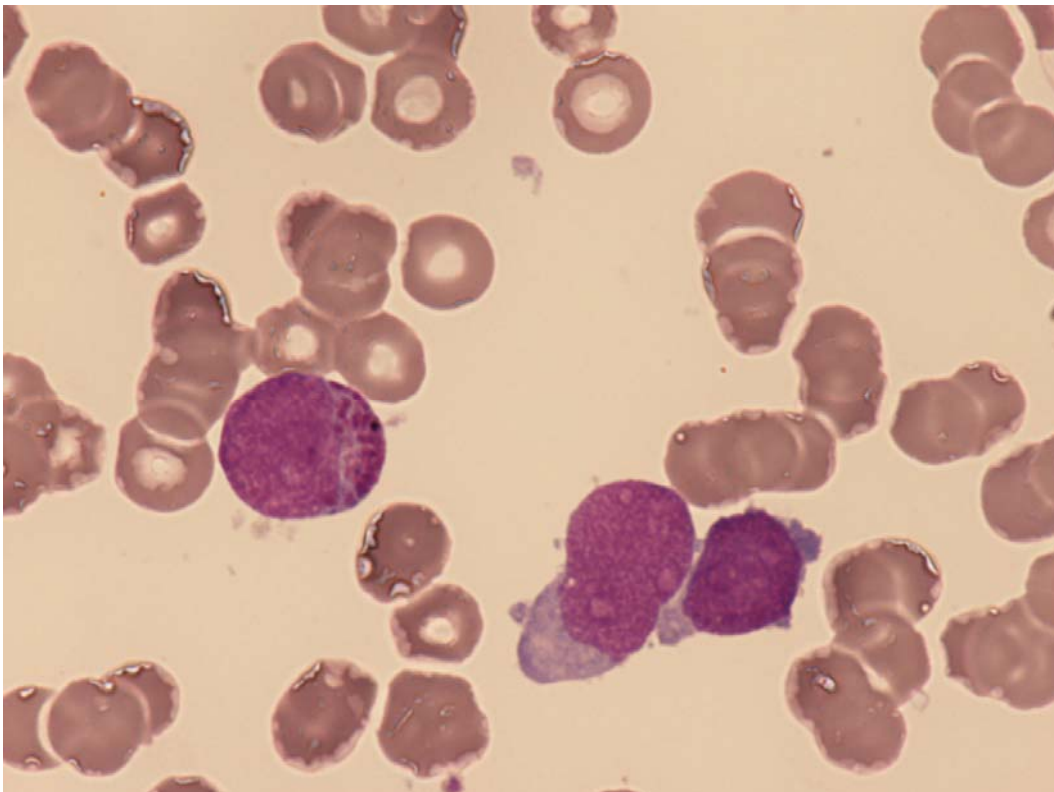


Fig 6: Blast with coarse basophilic granules and blasts agranular (peripheral blood).



Fig 7: Basophils (ANBE pos, CAE neg).

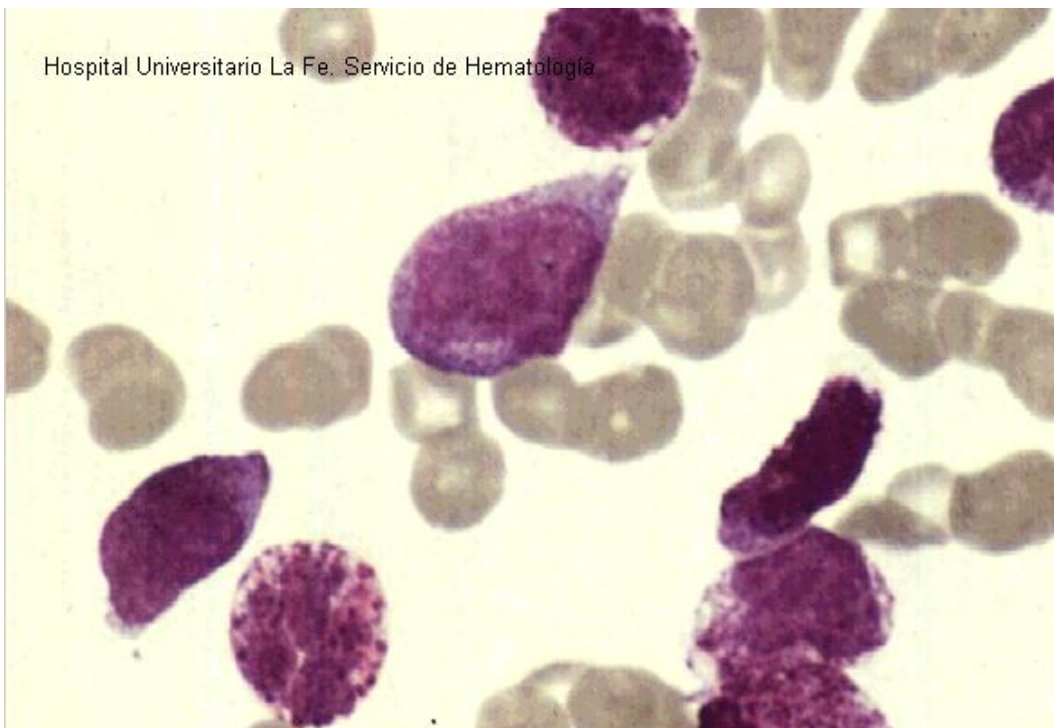


Fig 8: Basophils and blasts in bone marrow.

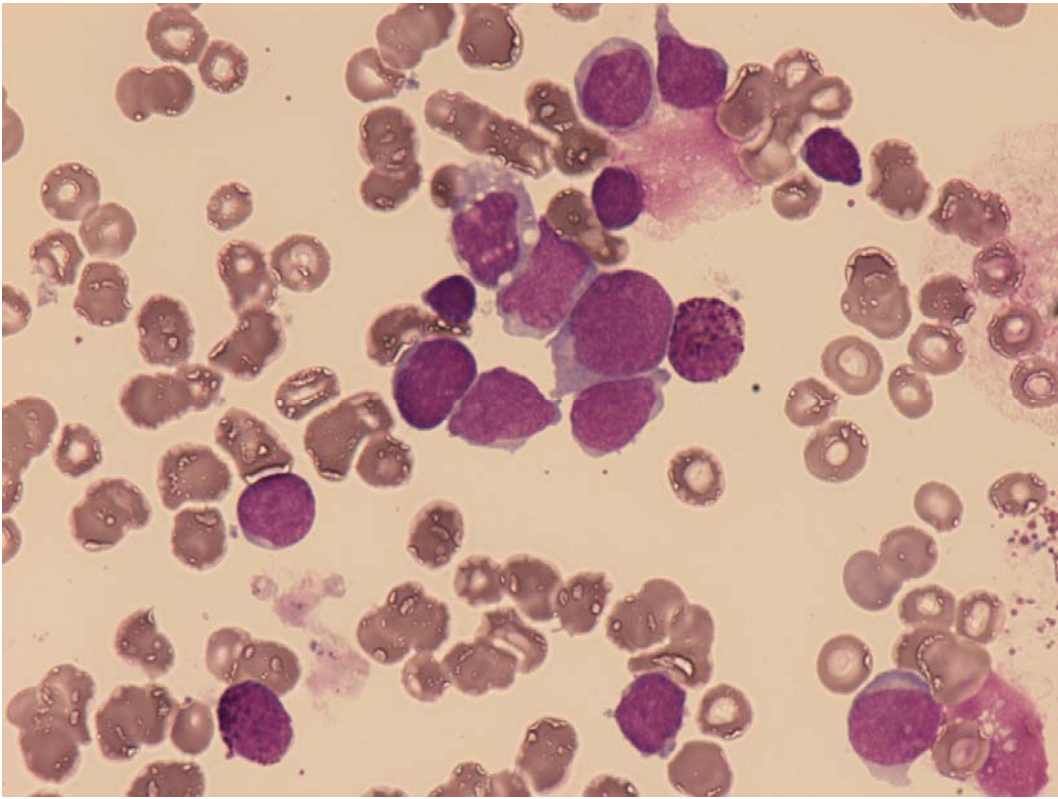


Fig 9: Basophils.